

FOR LEASE

3617 EASTHAM DR. ± 2,587 SF

8441 WARNER DR. ± 2,954 SF

CULVER CITY | CA

eastham
warner

FOR MORE INFORMATION, CONTACT:

DAVID FREITAG

P: 213.270.2235 | M: 310.413.9390

dfreitag@daumcre.com

CA License #00855673

MARIANNA LINK

P: 213.270.2228

mblink@daumcre.com

CA License #01943085

 **DAUM**
COMMERCIAL REAL ESTATE SERVICES

FOR LEASE

eastham warner

PROPERTY HIGHLIGHTS

- **3617 EASTHAM DR.:** ± 2,587 SF
Rate \$4.30/SF/Month, G
+ CAM \$0.13/SF
- **8441 WARNER DR.:** ± 2,954 SF
Rate \$4.20/SF/Month, G
+ CAM \$0.13/SF
- HVAC in Suite
- Skylights
- Polished Concrete Floors
- Exposed Bow Truss Ceiling
- Glass Roll-Up Doors
- Ideal for Editing, Special Effects, Advertising and Post Production
- Parking: \$185 per Space, per Month on Site
- Large Common Area
- Kitchen in Suite
- Light Rail Stop at Washington & National

Although all information is furnished regarding for sale, rental or financing is from sources deemed reliable, such information has not been verified and no express representation is made nor is any to be implied as to the accuracy thereof, and it is submitted subject to errors, omissions, changes of price, rental or other conditions, prior sale, lease or financing, or withdrawal without notice. D/AQ Corp. # 01129558

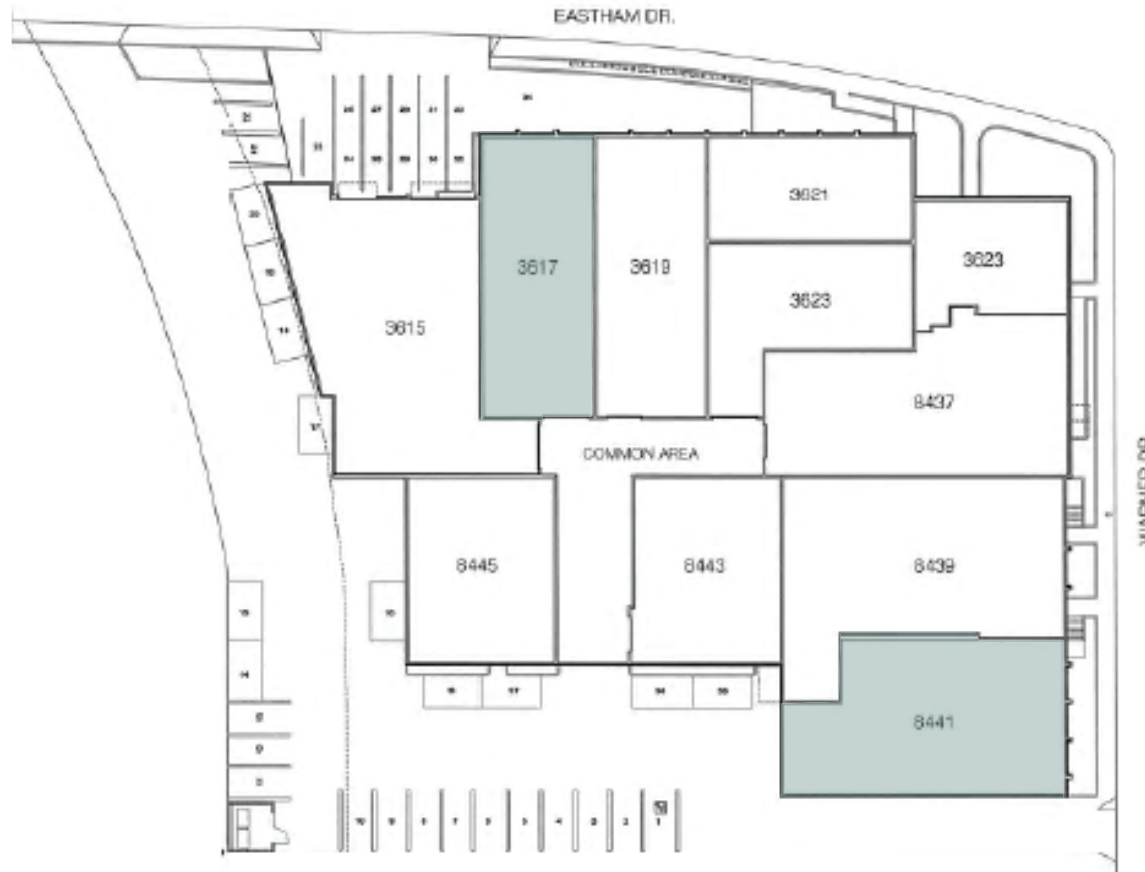
 **DAUM**
COMMERCIAL REAL ESTATE SERVICES

FOR LEASE

eastham warner



SITE PLAN



* NOT TO SCALE

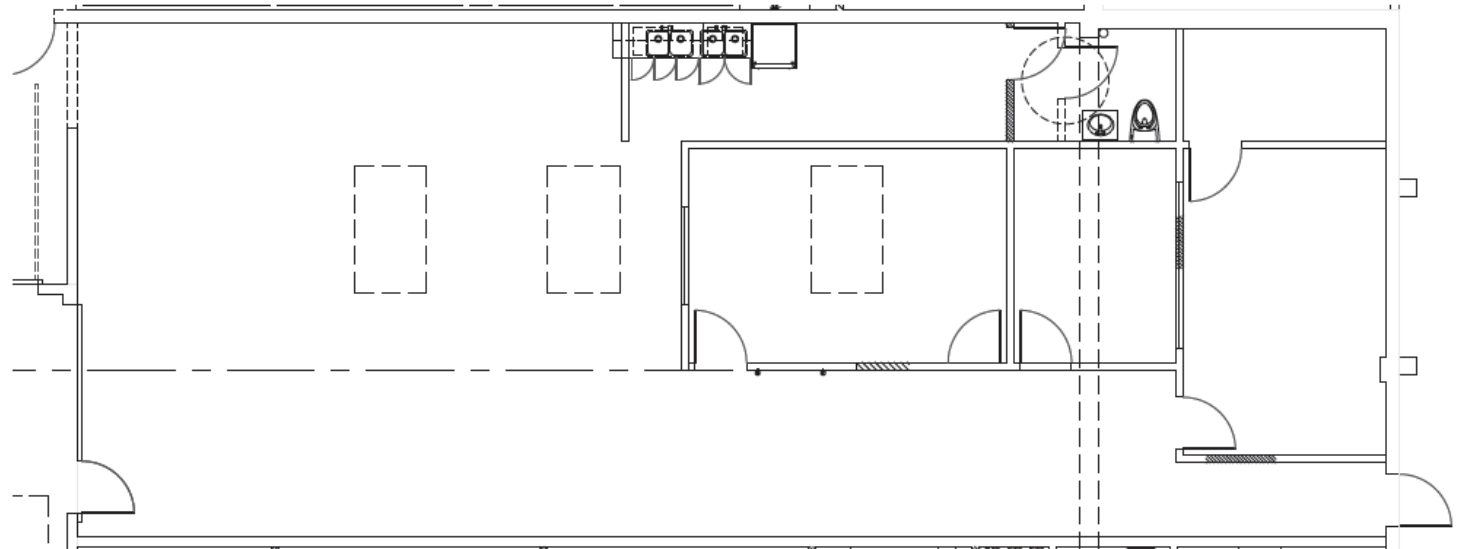
FOR LEASE

eastham warner



UNIT
3617

± 2,587 SF



* NOT TO SCALE



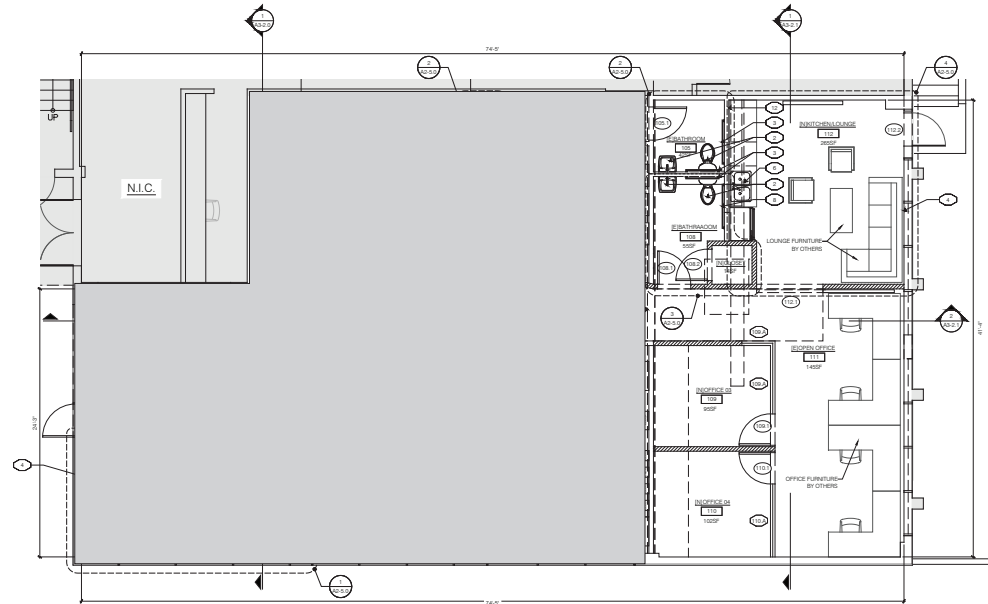
FOR LEASE

eastham warner



UNIT
8441

± 2,954 SF



* NOT TO SCALE



CULVER CITY

- DOWNTOWN**
- Culver City Farmer's Market
 - Grand Casino Cafe Bakery
 - Janga Grilliant
 - Kayndaves
 - CAVA
 - Carbon
 - The Actors Gang
 - Media Park
 - Wendy's
 - K-Zo
 - Inco Garage
 - Culver City Toyota
 - Culver City Honda
 - Trader Joe's

WASHINGTON/NATIONAL

HELMS BAKERY DISTRICT

ARTS DISTRICT

HAYDEN TRACT

EASTHAM WARNER DESIGN CENTER

JEFFERSON CREATIVE OFFICE CORRIDOR

- Dining & Nightlife
- Shopping & Services

Metro Expo Line **M**

