



**MULTI-PURPOSE BUILDING / CREATIVE OFFICE / INDUSTRIAL**

**FOR LEASE 13,276 SF**

LOS ANGELES

**2300**

CALIFORNIA

**EAST ELEVENTH STREET**

**DAVID FREITAG**

P: 213.270.2235

dfreitag@daumcre.com

CA License #00855673

**SAM ANDREWS**

P: 213.270.2265

sandrews@daumcre.com

CA License #02398825

**BEN ANDREWS**

P: 213.270.2246

bandrews@daumcre.com

CA License #02388899

D/AQ Corp. #01129558. Maps Courtesy ©Google & ©Microsoft. Although all information is furnished regarding for sale, rental or financing is from sources deemed reliable, such information has not been verified and no express representation is made nor is any to be implied as to the accuracy thereof, and it is submitted subject to errors, omissions, changes of price, rental or other conditions, prior sale, lease or financing, or withdrawal without notice.

**ONCOR INTERNATIONAL | [www.daumcommercial.com](http://www.daumcommercial.com)**



FOR LEASE **EAST ELEVENTH STREET LA** | CA

- 1. THE ROW DTLA
- 2. WARNER MUSIC GROUP
- 3. SOHO HOUSE
- 4. AI ART HOUSE
- 5. THE HUNTSMAN
- 6. GUESS HEADQUARTERS
- 7. BLUE STAR DINER
- 8. 1700 S. SANTA FE CREATIVE OFFICE CAMPUS
- 9. KNUPP GALLERY LA
- 10. NIGHT GALLERY
- 11. GHEBALY GALLERY

# STREET



**13,276 SF**  
BUILDING SIZE



**YES**  
SPRINKLERS



**14'**  
CEILING HEIGHT



**20**  
PARKING SPACES



**POL**  
BUILDING 33,372



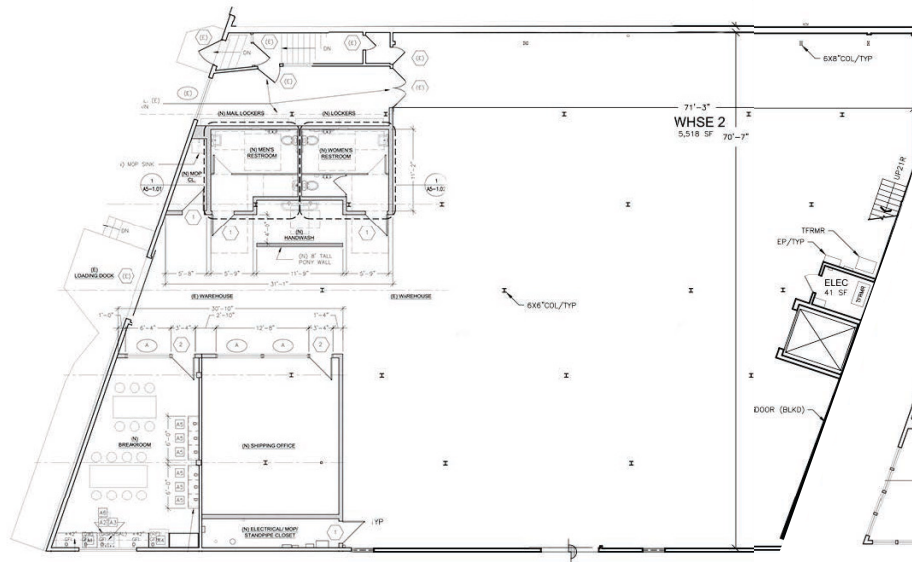
**M2**  
ZONING

- Many Great Applications Including Design Studio, Showroom, Gallery, and Creative
- Close Proximity to Arts District, and Four (4) Freeways: 10, 5, 101 and 60

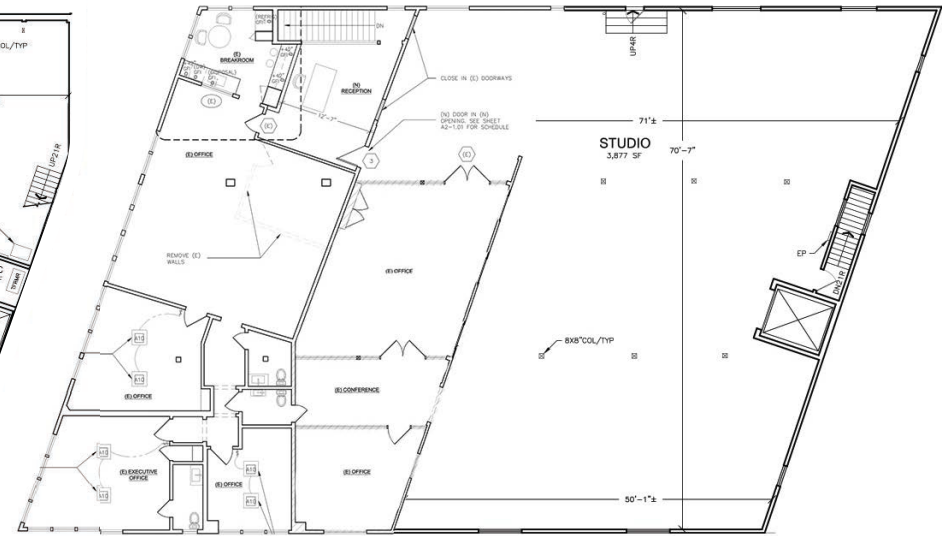
- Abundant Natural Light
- Second Floor Creative Office/Design Space is Fully Air Conditioned
- Completely Renovated August 2020

# FLOOR PLANS

11TH STREET



**ENTRY LEVEL FLOOR**

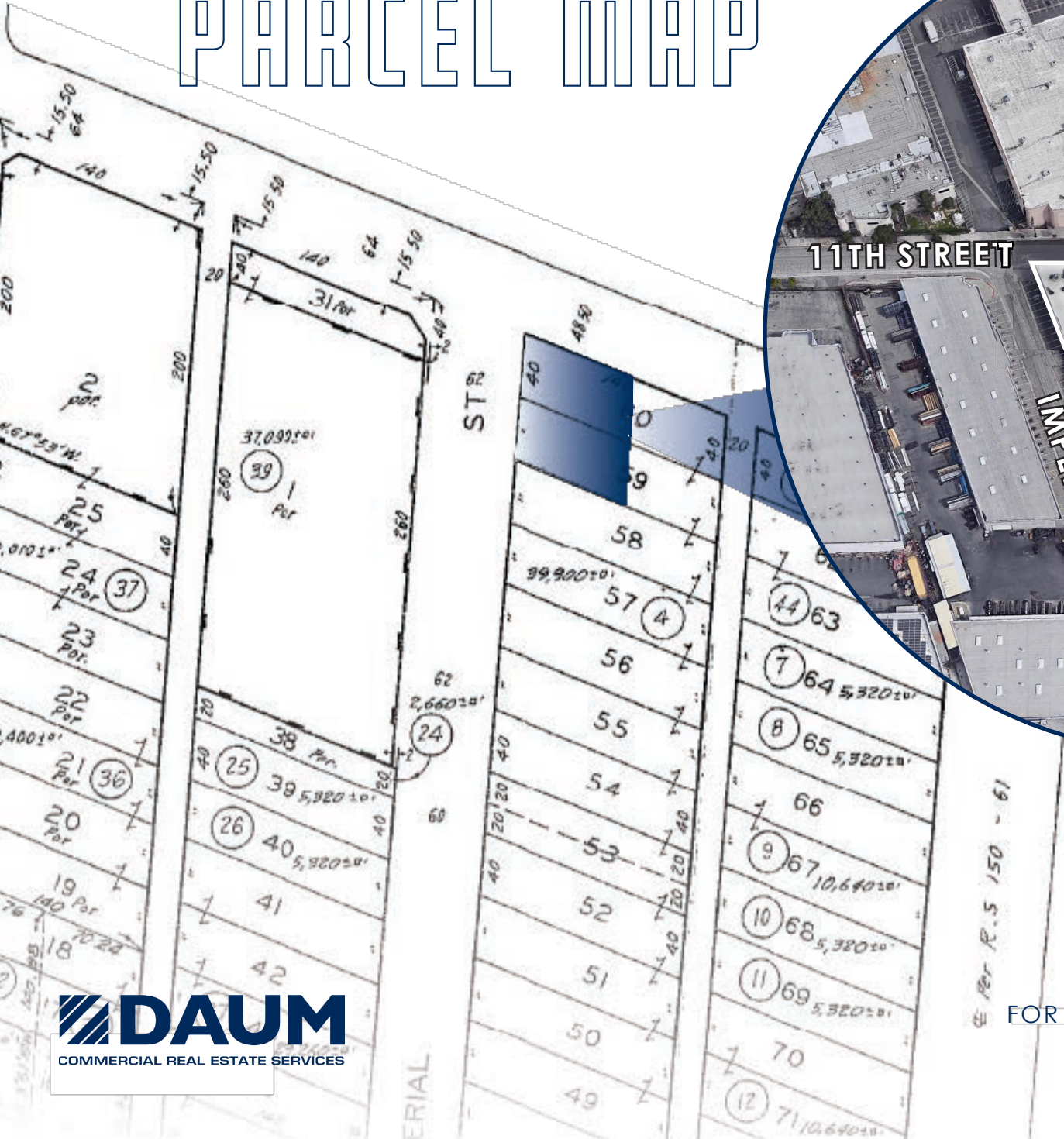


**SECOND FLOOR CREATIVE OFFICE SPACE/DESIGN**

IMPERIAL STREET

\*NOT TO SCALE

# PARCEL MAP





FOR LEASE **2100** EAST ELEVENTH STREET LA | CA

**DAUM**  
COMMERCIAL REAL ESTATE SERVICES





**DAUM**  
COMMERCIAL REAL ESTATE SERVICES

FOR LEASE **EAST ELEVENTH STREET LA | CA**

**MULTI-PURPOSE BUILDING / CREATIVE OFFICE / INDUSTRIAL**

**FOR LEASE 13,276 SF**

LOS ANGELES

**2300**

CALIFORNIA

**EAST ELEVENTH STREET**

**DAVID FREITAG**

P: 213.270.2235

dfreitag@daumcre.com

CA License #00855673

**SAM ANDREWS**

P: 213.270.2265

sandrews@daumcre.com

CA License #02398825

**BEN ANDREWS**

P: 213.270.2246

bandrews@daumcre.com

CA License #02388899



D/AQ Corp. #01129558. Maps Courtesy @Google & @Microsoft. Although all information is furnished regarding for sale, rental or financing is from sources deemed reliable, such information has not been verified and no express representation is made nor is any to be implied as to the accuracy thereof, and it is submitted subject to errors, omissions, changes of price, rental or other conditions, prior sale, lease or financing, or withdrawal without notice.

**ONCOR INTERNATIONAL | [www.daumcommercial.com](http://www.daumcommercial.com)**