

Industrial

INDUSTRIAL FOR LEASE & SALE

±3,750 SF AVAILABLE



1383

E. 15TH STREET

LOS ANGELES | CA

**DAUM**  
COMMERCIAL REAL ESTATE SERVICES

# E. 15TH STREET 1383

PROPERTY HIGHLIGHTS  
±3,750 SF AVAILABLE

💰 Lease Rate: \$1.30/SF/Month, Gross

💰 Sale Price: \$290.00/SF

🏢 Outstanding Downtown Location

📍 Close to The Garment District & Produce Market

🛣️ 1 Block from The 10 Freeway

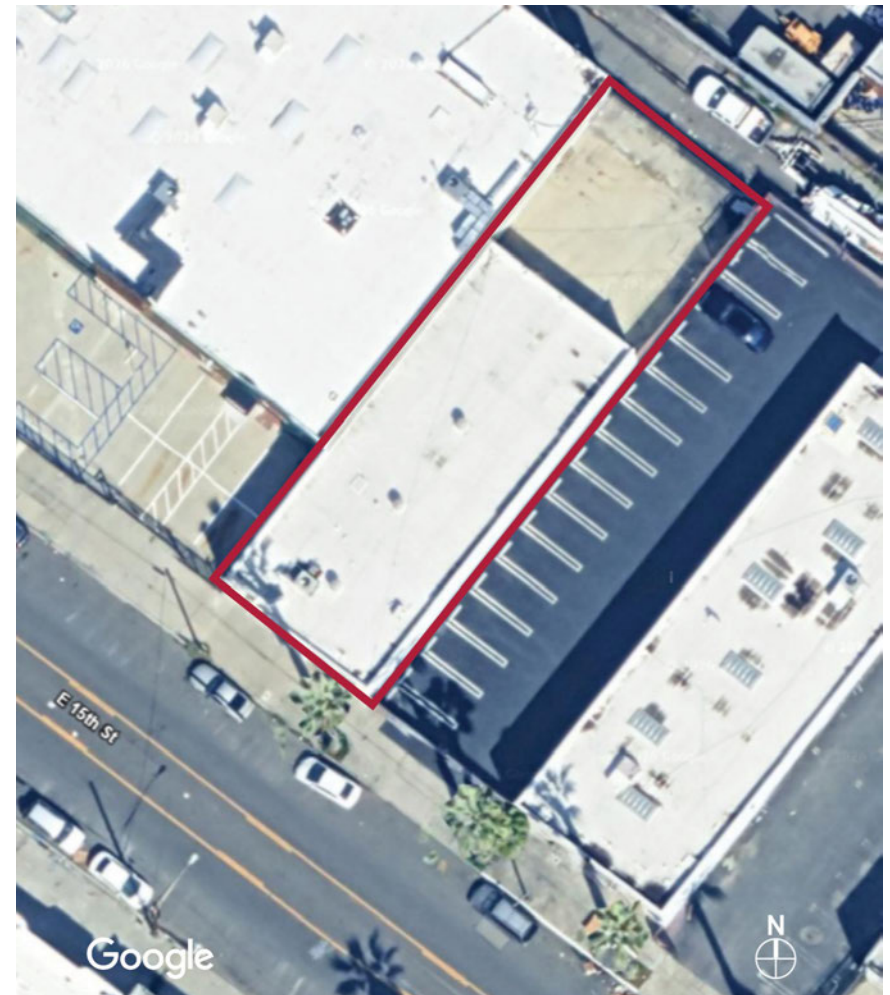
🏗️ Block Construction

🚗 6 Secure Car Parking

📄 ± 792 SF Office

🔑 12' Clear Height

🚪 2 GL Doors

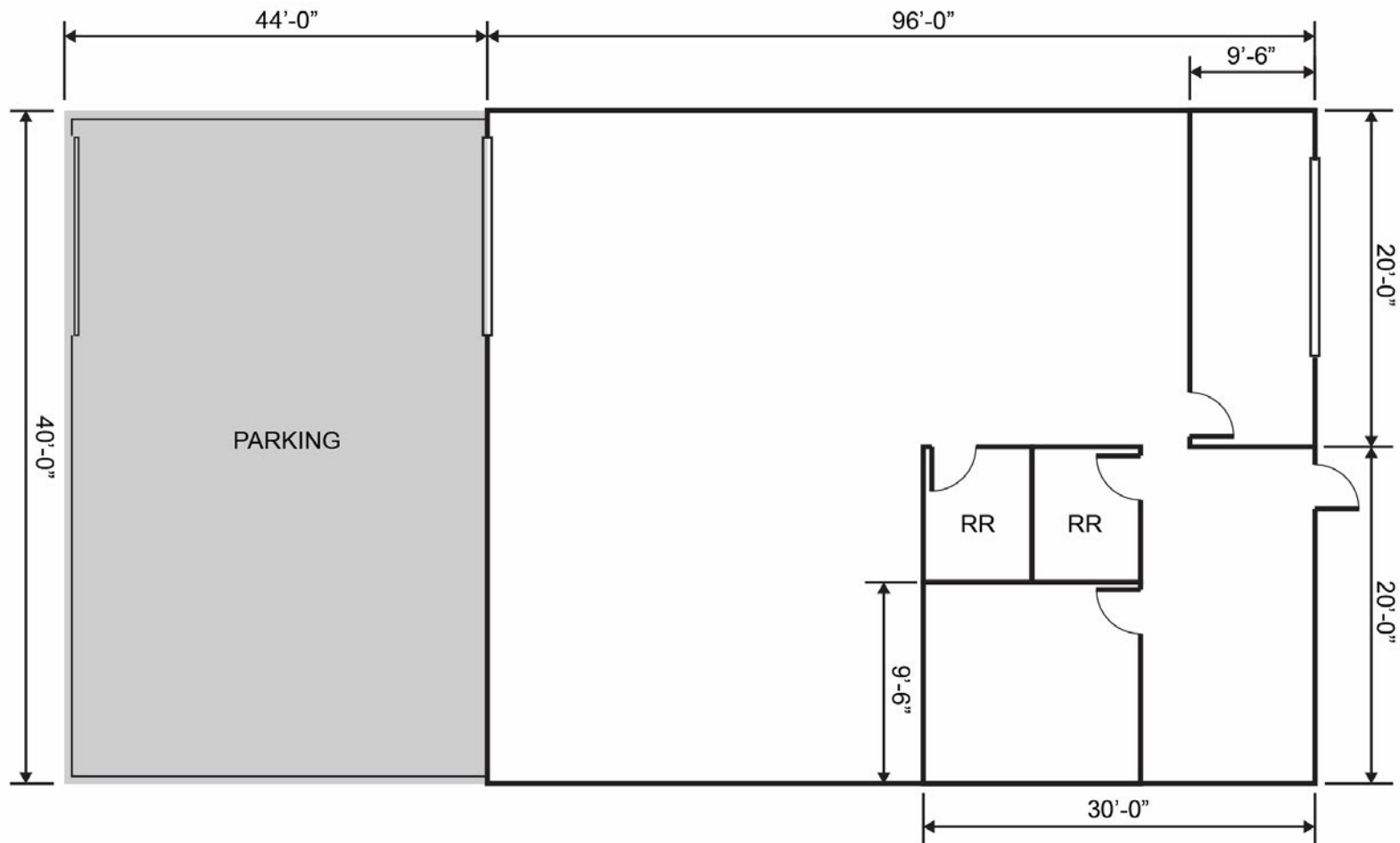


# 1383

E. 15TH STREET

LOS ANGELES | CA 90021

## FLOOR PLAN

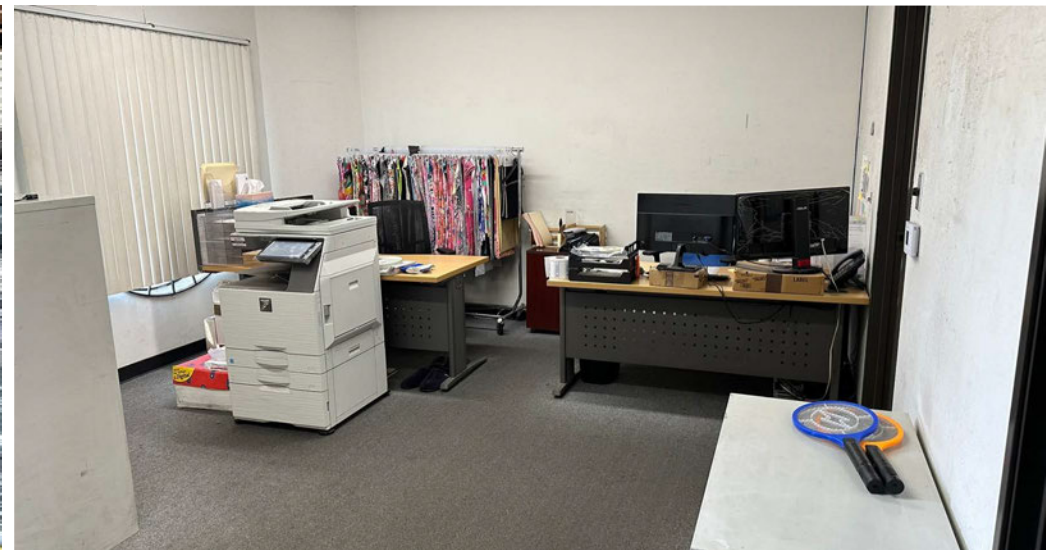


\*ALL MEASUREMENTS ARE INTERIOR MEASUREMENTS AND ARE APPROXIMATE AND ARE NOT TO SCALE. ALL IMPROVEMENTS ARE NOT SHOWN.

# 1383

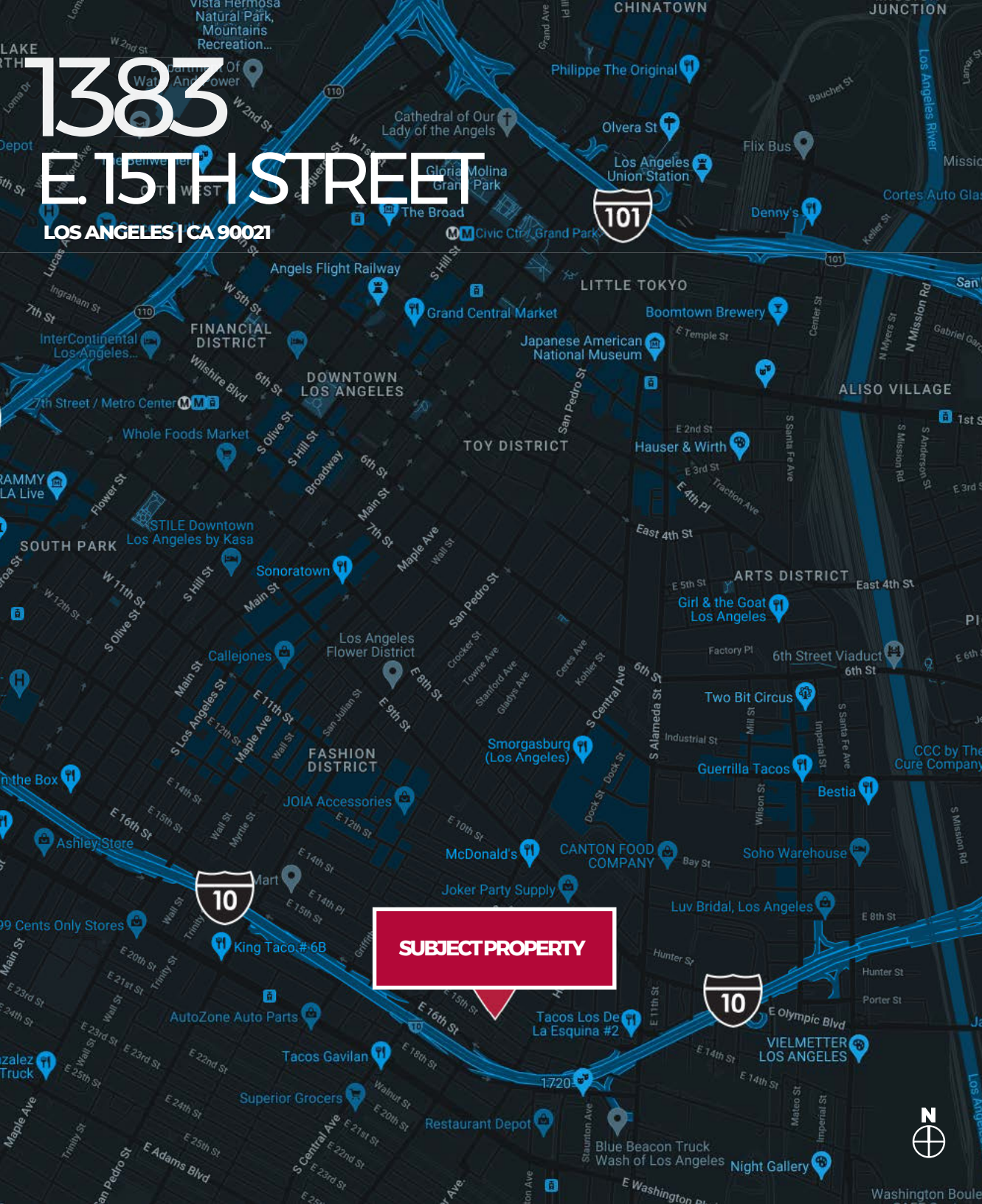
E. 15TH STREET  
LOS ANGELES | CA 90021

## PHOTO GALLERY



# 1383 E. 15TH STREET

LOS ANGELES | CA 90021



## LOCATION



LAX AIRPORT  
14.8 MILES | 30 MINS



ARTS DISTRICT  
1.8 MILES | 5 MINS

FASHION DISTRICT  
1.0 MILES | 5 MINS

LONG BEACH  
23.5 MILES | 35 MINS



I-10 FREEWAY E ON RAMP  
0.3 MILES | 1 MIN

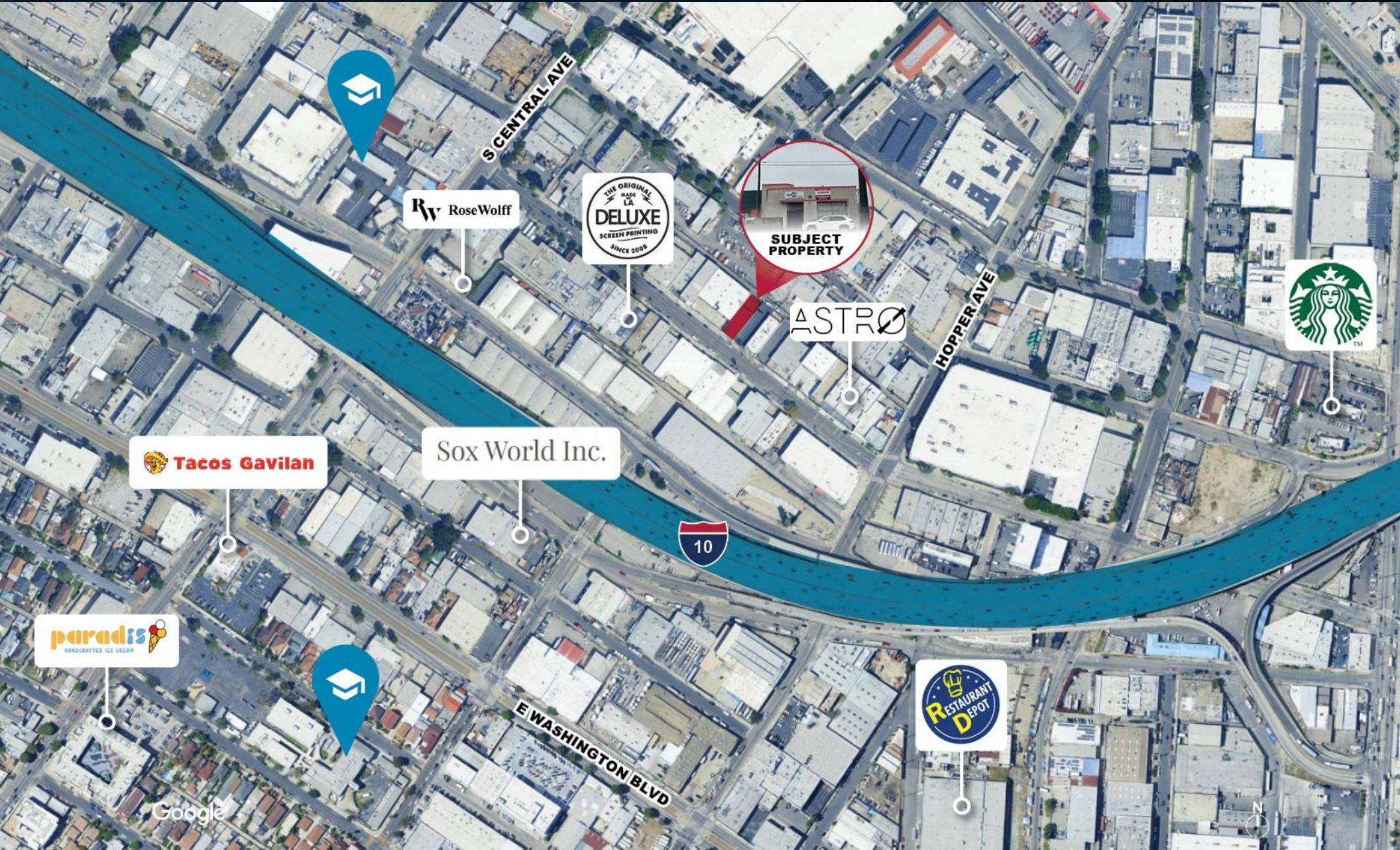
1383 E 15th St. is an industrial warehouse property in Downtown Los Angeles's Warehouse District, just one block from the I-10 Freeway.

Its central location near the Garment District and Produce Market offers excellent connectivity for distribution, light manufacturing, or service uses.

# 1383 E. 15TH STREET

LOS ANGELES | CA 90021

AMENITIES MAP



Rw RoseWolff



ASTRO



Tacos Gavilan

Sox World Inc.



paradis HANDCRAFTED ICE CREAM



RESTAURANT DEPOT

Google



# 1383 E. 15TH STREET

LOS ANGELES | CA 90021

D/AQ Corp. #01129558. Maps Courtesy ©Google & ©Microsoft. Although all information is furnished regarding for sale, rental or financing is from sources deemed reliable, such information has not been verified and no express representation is made nor is any to be implied as to the accuracy thereof, and it is submitted subject to errors, omissions, changes of price, rental or other conditions, prior sale, lease or financing, or withdrawal without notice.

[www.daumcommercial.com](http://www.daumcommercial.com)

FOR MORE INFORMATION, CONTACT:

**DAVID FREITAG**

**P: 213.270.2235**

[dfreitag@daumcre.com](mailto:dfreitag@daumcre.com)

CA License #00855673

**SAM ANDREWS**

**P: 213.270.2265**

[sandrews@daumcre.com](mailto:sandrews@daumcre.com)

CA License #02398825

**BEN ANDREWS**

**P: 213.270.2246**

[bandrews@daumcre.com](mailto:bandrews@daumcre.com)

CA License #02388899

**DAUM**  
COMMERCIAL REAL ESTATE SERVICES