

AVAILABLE
± 13,074 SF

INDUSTRIAL



FOR LEASE

3652 EASTHAM DR. | CULVER CITY | CA

FOR MORE INFORMATION,
PLEASE CONTACT US:

DAVID FREITAG
EXECUTIVE VICE PRESIDENT
P: 213.270.2235 | M: 310.413.9390
E: dfreitag@daumcre.com
CA License #00855673


COMMERCIAL REAL ESTATE SERVICES

D/AQ Corp. #01129558. Maps Courtesy ©Google & ©Microsoft. Although all information is furnished regarding for sale, rental or financing is from sources deemed reliable, such information has not been verified and no express representation is made nor is any to be implied as to the accuracy thereof, and it is submitted subject to errors, omissions, changes of price, rental or other conditions, prior sale, lease or financing, or withdrawal without notice.

www.daumcommercial.com

FOR LEASE

3652 EASTHAM DR. | CULVER CITY | CA

INDUSTRIAL

AVAILABLE SF

± 13,074 SF

OFFICE

± 2,688 SF

LOT SIZE

± 0.48 AC
± 20,908 SF

ZONING

M1

CLEAR HEIGHT

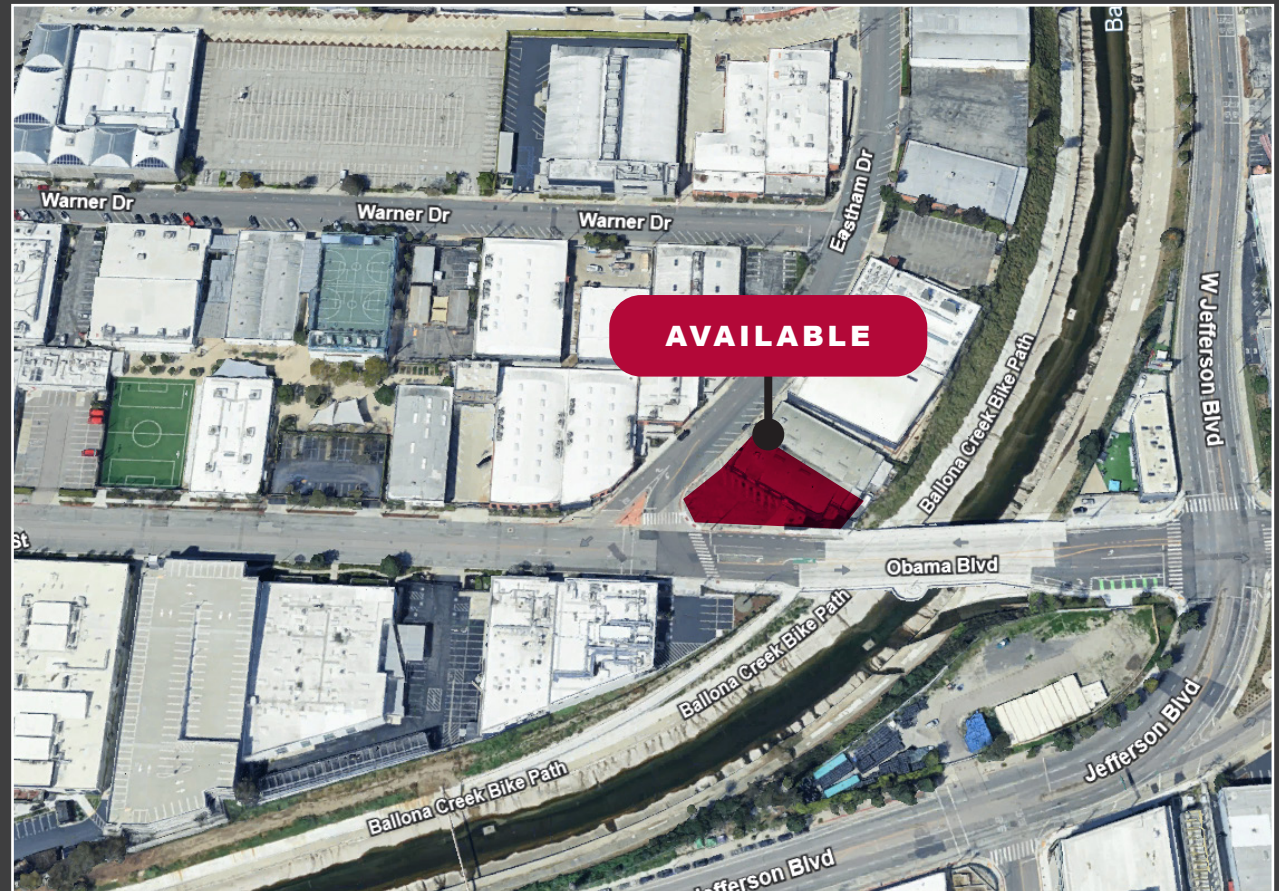
12'

PARKING

17 Spaces

PROPERTY HIGHLIGHTS

- Completely Refurbished
- Located in Culver City's Renowned Hayden Tract
- Sandblasted Bow Truss Roof
- Abundance of Natural Light
- Ample Parking both On-Site and Off-Site



FOR LEASE

3652 EASTHAM DR. | CULVER CITY | CA

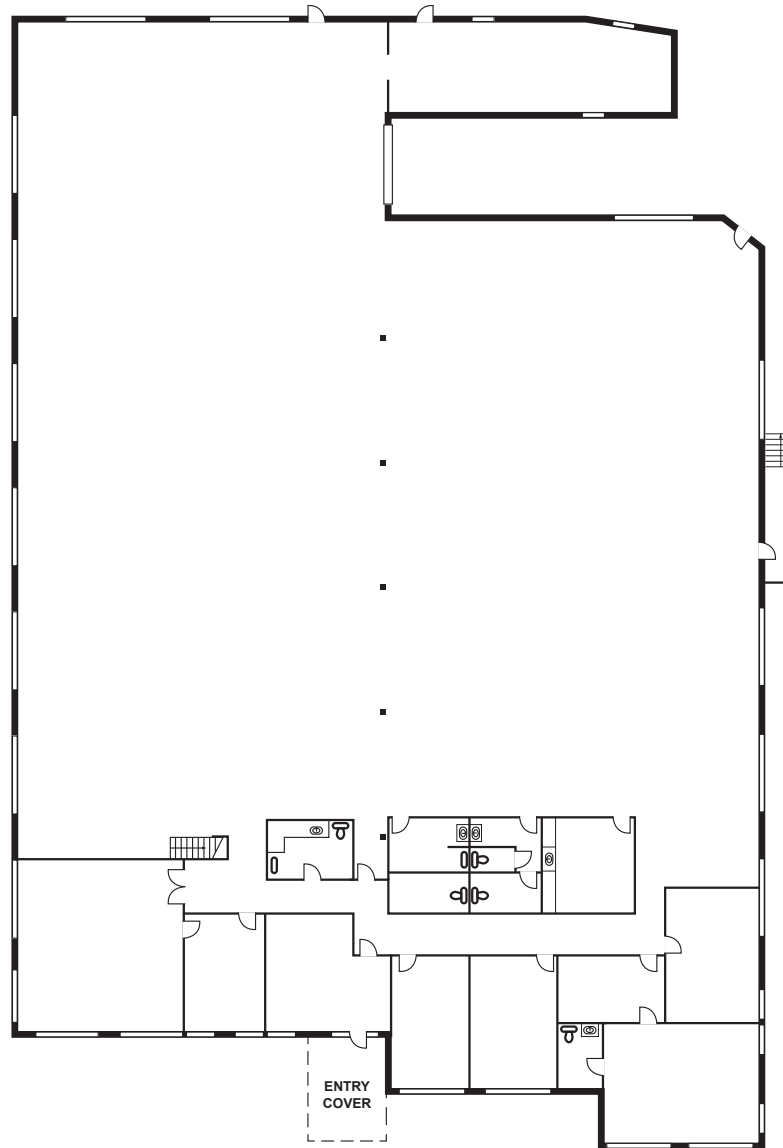
INDUSTRIAL



FOR LEASE

3652 EASTHAM DR. | CULVER CITY | CA

INDUSTRIAL



NOT TO SCALE

*ALL MEASUREMENTS ARE APPROXIMATE AND ARE NOT TO SCALE. MEASUREMENTS ARE INTERIOR MEASUREMENTS, FLOOR PLAN DOES NOT SHOW ALL IMPROVEMENTS.



FOR LEASE

3652 EASTHAM DR. | CULVER CITY | CA

INDUSTRIAL

PUBLIC TRANSPORTATION



COMMUTER RAIL

La Cienega/Jefferson (Expo Line)

2 min | 0.6 mi

Culver City (Expo Line)

3 min | 0.9 mi



AIRPORT

Los Angeles International

15 min | 7.7 mi

Bob Hope

31 min | 24.2 mi

DEMOGRAPHICS

	3 MILES	5 MILES	10 MILES
2020 POPULATION	305,511	920,407	2,867,838
2024 POPULATION	306,619	920,047	2,821,432
2029 POPULATION PROJECTION	299,410	897,690	2,744,437
2020 HOUSEHOLDS	126,821	387,629	1,110,373
2024 HOUSEHOLDS	126,555	386,698	1,098,436
2029 HOUSEHOLD PROJECTION	123,367	376,929	1,068,871
TOTAL SPECIFIED CONSUMER SPENDING (\$)	\$4.2B	\$12.7B	\$34.6B

