



FOR LEASE ±8,700 SF | HISTORIC WEST ADAMS LOCATION

1909 & 1910
W Adams
Blvd.

LOS ANGELES | CA

PROPERTY HIGHLIGHTS

- ±8,700 SF Industrial
- 1 GL Door (10'x11')
- Storefront Retail/Office
- Historic West Adams Location
- Fenced Parking Lot - ± 8,756 SF
- Creative Offices
- ±2,400 SF Office
- Wood Truss
- Power: 200Amp / 120/240V / 1P
- Exposed Brick
- 15 Parking Spaces
- Clear Span
- 12' Clear Height

EXCLUSIVE LISTING AGENT

DAVID FREITAG

P: 213.270.2235 | M: 310.413.9390

E: dfreitag@daumcre.com

CA License #00855673

D/AQ Corp. #01129558. Maps Courtesy ©Google & ©Microsoft. Although all information is furnished regarding for sale, rental or financing is from sources deemed reliable, such information has not been verified and no express representation is made nor is any to be implied as to the accuracy thereof, and it is submitted subject to errors, omissions, changes of price, rental or other conditions, prior sale, lease or financing, or withdrawal without notice.

WWW.THELAININDUSTRIAL.COM

DAUM
COMMERCIAL REAL ESTATE SERVICES

1909 & 1910 W Adams Blvd.

PHOTOS

LOS ANGELES | CA



D/AQ Corp. #01129558. Maps Courtesy ©Google & ©Microsoft. Although all information is furnished regarding for sale, rental or financing is from sources deemed reliable, such information has not been verified and no express representation is made nor is any to be implied as to the accuracy thereof, and it is submitted subject to errors, omissions, changes of price, rental or other conditions, prior sale, lease or financing, or withdrawal without notice.

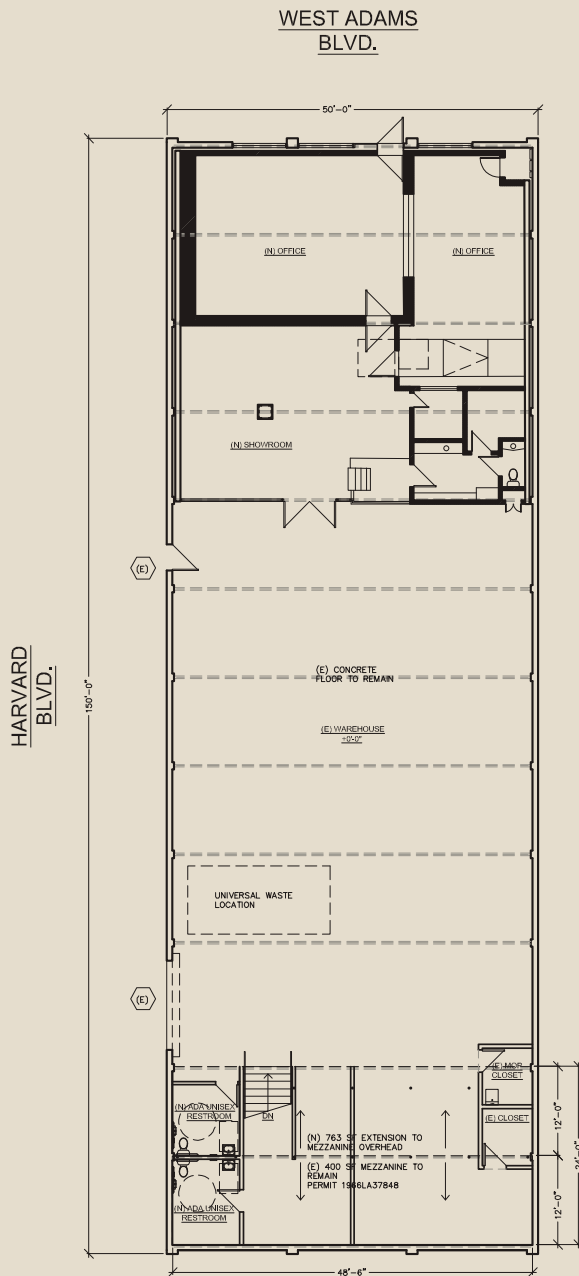
www.daumcommercial.com | www.thelaindustrial.com

DAUM
COMMERCIAL REAL ESTATE SERVICES

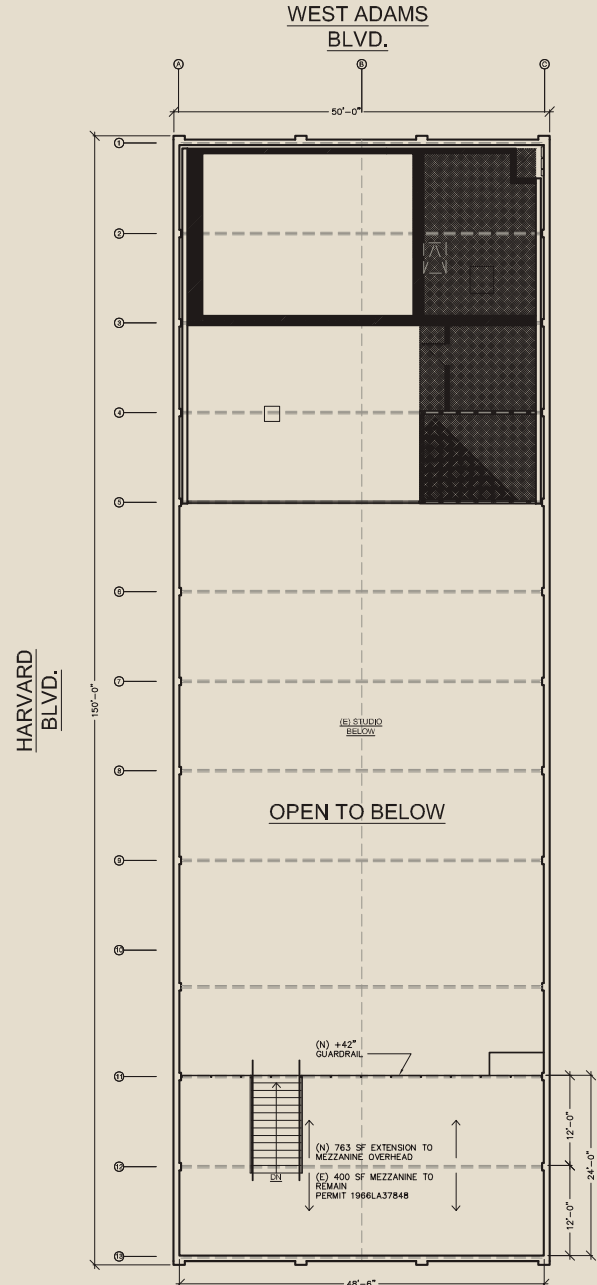
1909 & 1910 W Adams Blvd.

FLOOR PLAN

LOS ANGELES | CA



GROUND LEVEL



MEZZANINE

