

FOR LEASE

3619 EASTHAM DR. ± 2,552 SF

8439 WARNER DR. ± 3,513 SF

CULVER CITY | CA

eastham
warner

FOR MORE INFORMATION, CONTACT:

DAVID FREITAG

P: 213.270.2235 | M: 310.413.9390

dfreitag@daumcre.com

CA License #00855673

MARIANNA LINK

P: 213.270.2228

mmlink@daumcre.com

CA License #01943085

DAUM
COMMERCIAL REAL ESTATE SERVICES

FOR LEASE

eastham warner

PROPERTY HIGHLIGHTS

- 3619 EASTHAM DR. ± 2,552 SF
- 8439 WARNER DR. ± 3,513 SF
- HVAC in Suite
- Skylights
- Polished Concrete Floors
- Exposed Bow Truss Ceiling
- Glass Roll-Up Doors
- Ideal for Editing, Special Effects, Advertising and Post Production
- Parking: \$180 per space per month on site
- Large Common Area
- Kitchen in Suite
- Light Rail Stop at Washington & National

• **3619 EASTHAM DR.:**

Rate \$4.30 /SF/Month, G
+ CAM \$0.14 PSF

• **8439 WARNER DR.:**

Rate \$4.30 /SF/Month, G
+ CAM \$0.14 PSF

Although all information is furnished regarding for sale, rental or financing is from sources deemed reliable, such information has not been verified and no express representation is made nor is any to be implied as to the accuracy thereof, and it is submitted subject to errors, omissions, changes of price, rental or other conditions, prior sale, lease or financing, or withdrawal without notice. D/AQ Corp. # 01129558

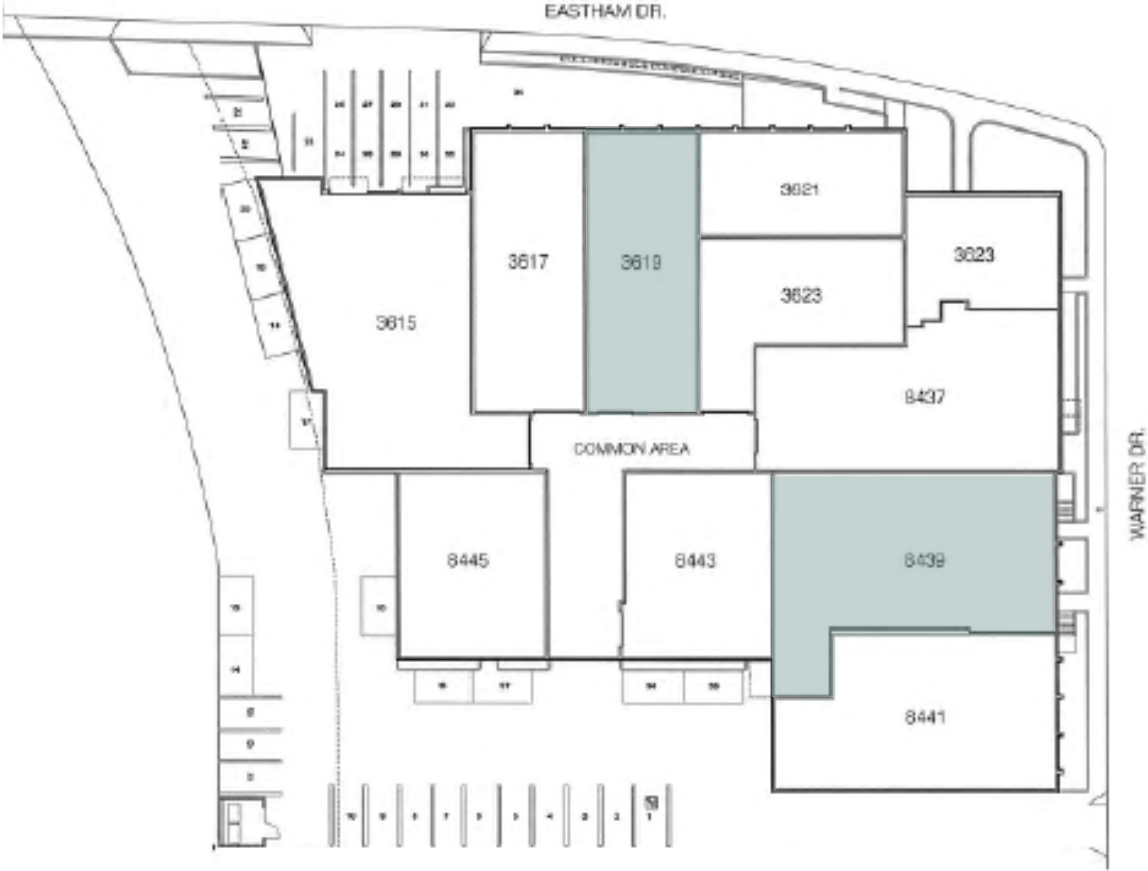
 **DAUM**
COMMERCIAL REAL ESTATE SERVICES

FOR LEASE

eastham
warner



SITE PLAN



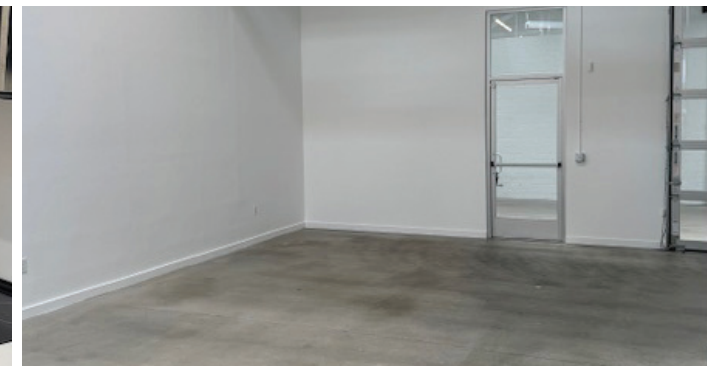
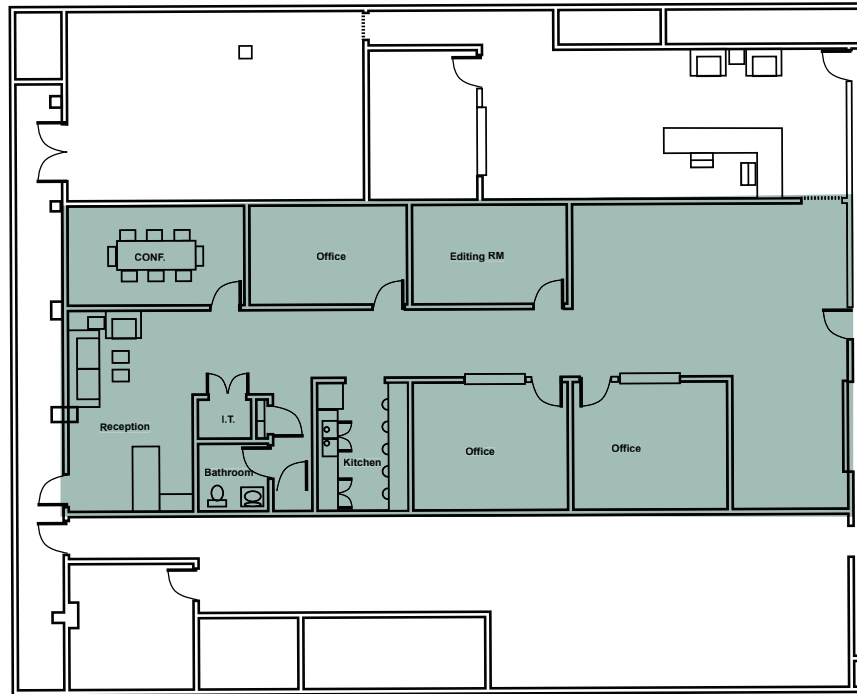
FOR LEASE

eastham warner



UNIT
3619

± 2,552 SF



FOR LEASE

eastham warner



UNIT
8439

± 3,513 SF

