



Premier Industrial Distribution Building  
Excellent North Vernon Location



**126,563 SF AVAILABLE FOR LEASE**

**OUTSTANDING DISTRIBUTION BUILDING**

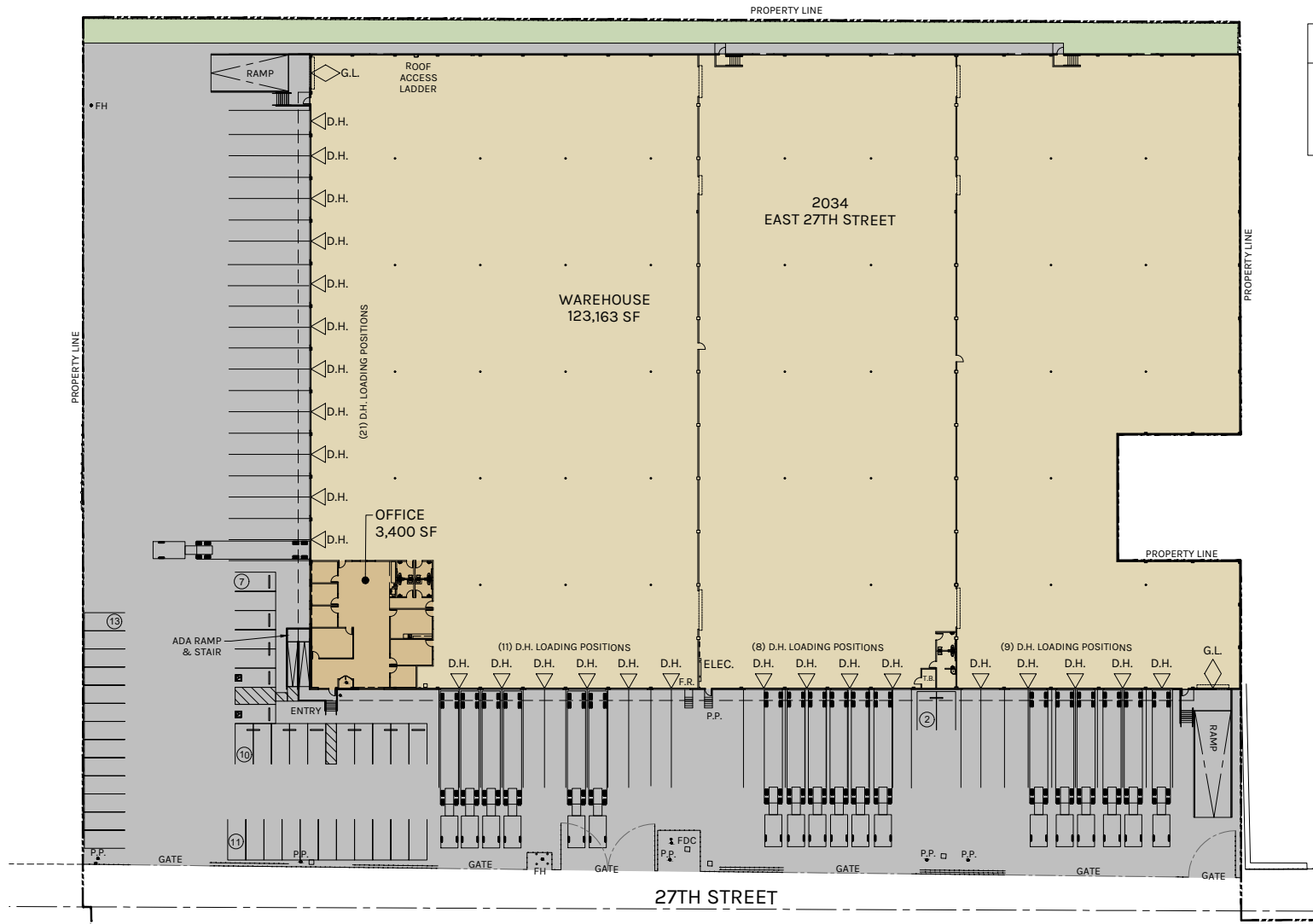
2034-2040 EAST 27TH ST. | VERNON, 90058



## WAREHOUSE DISTRIBUTION FACILITY

- 126,563 SF Distribution Building
- 78,519 SF Fenced Yard
- 24'-26' Clear Height
- 49 Dock High Doors
- ESFR Sprinkler System-K25 @ 15 PSI
- Two (2) GL Doors
- Brand New 3,400 SF Offices Class A
- Professionally Owned and Managed
- Minutes to Downtown/Freeways
- Excellent North Vernon Location
- Refurbishment Complete





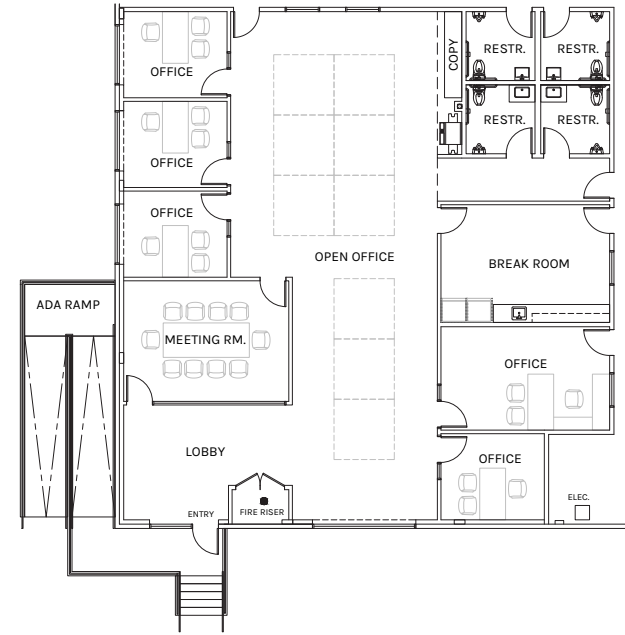
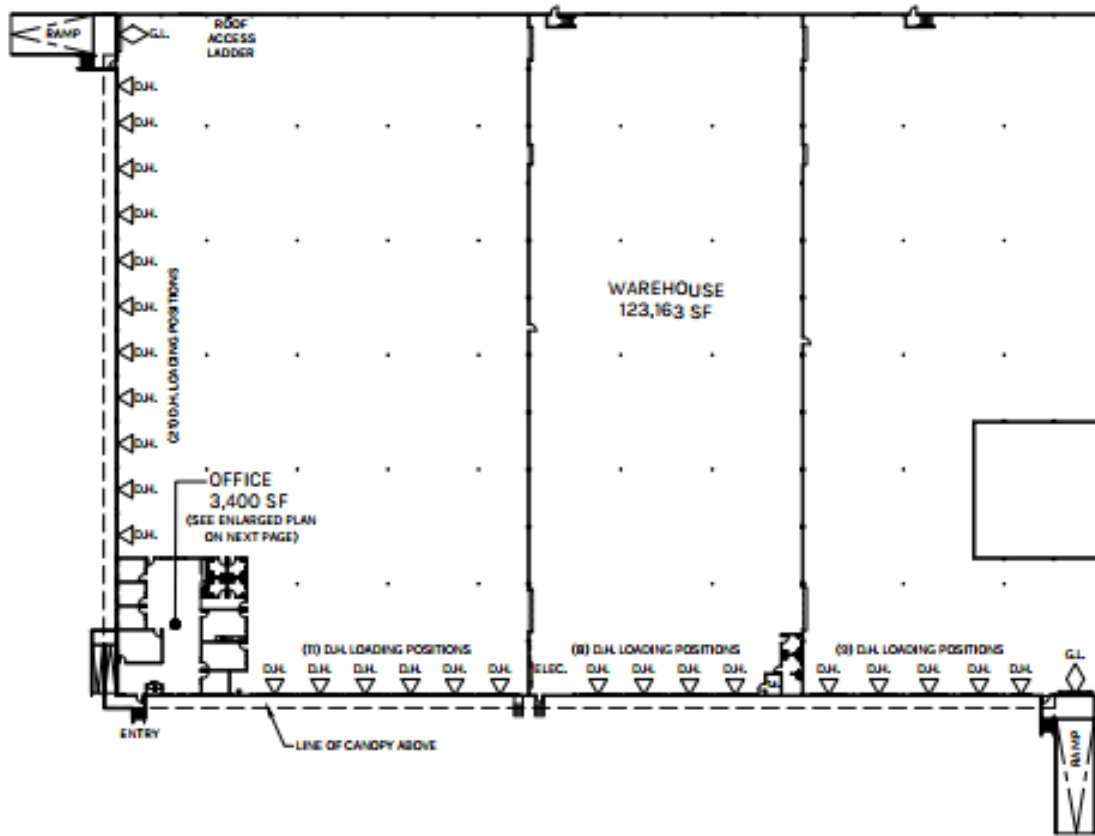
PLAN LEGEND	
	GROUND LOADING DOOR SYMBOL
	DOCK HIGH LOADING DOOR SYMBOL

**WAREHOUSE**  
123,163 SF

**OFFICE**  
3,400 SF

**TOTAL**  
126,563 SF

**PLAN LAYOUT SUBJECT TO FIELD CONDITIONS AND MAY DIFFER FROM PLAN AS SHOWN. ALL INFORMATION PRESENTED ON THIS DRAWING IS PRESUMED TO BE ACCURATE, HOWEVER TENANT SHOULD VERIFY PERTINENT INFORMATION PRIOR TO COMMITTING TO A LEASE. ANY FURNITURE OR APPLIANCES SHOWN ON PLAN ARE FOR CONCEPT ONLY AND WILL BE TENANT PROVIDED.**

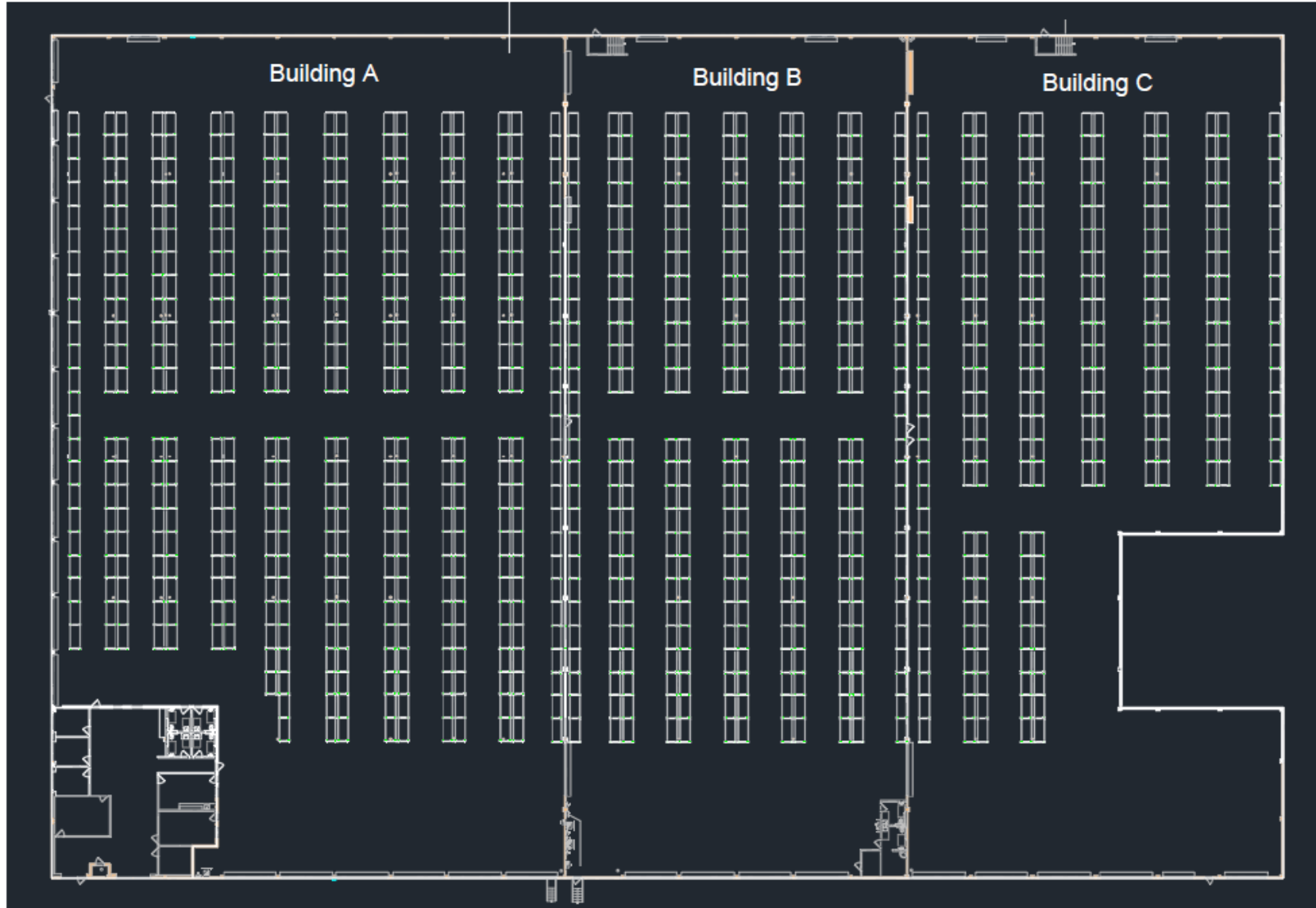


**WAREHOUSE**  
123,163 SF

**OFFICE**  
3,400 SF

**TOTAL**  
126,563 SF

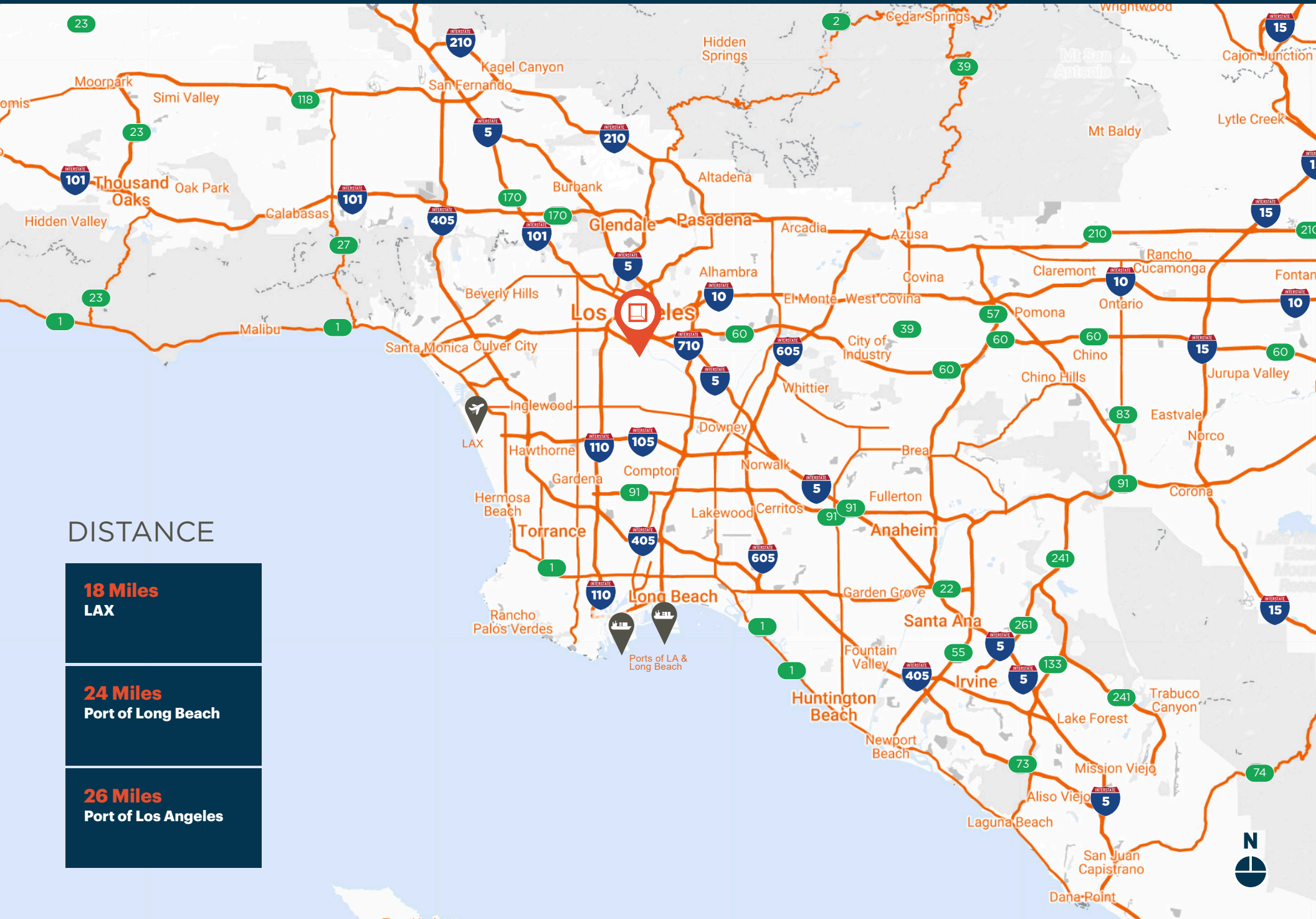
PLAN LAYOUT SUBJECT TO FIELD CONDITIONS AND MAY DIFFER FROM PLAN AS SHOWN. ALL INFORMATION PRESENTED ON THIS DRAWING IS PRESUMED TO BE ACCURATE, HOWEVER TENANT SHOULD VERIFY PERTINENT INFORMATION PRIOR TO COMMITTING TO A LEASE. ANY FURNITURE OR APPLIANCES SHOWN ON PLAN ARE FOR CONCEPT ONLY AND WILL BE TENANT PROVIDED.



**PLAN LAYOUT SUBJECT TO FIELD CONDITIONS AND MAY DIFFER FROM PLAN AS SHOWN. ALL INFORMATION PRESENTED ON THIS DRAWING IS PRESUMED TO BE ACCURATE, HOWEVER TENANT SHOULD VERIFY PERTINENT INFORMATION PRIOR TO COMMITTING TO A LEASE. ANY FURNITURE OR APPLIANCES SHOWN ON PLAN ARE FOR CONCEPT ONLY AND WILL BE TENANT PROVIDED.**

# Location

2034-2040 EAST 27TH ST. | VERNON, 90058



## DISTANCE

**18 Miles**  
LAX

**24 Miles**  
Port of Long Beach

**26 Miles**  
Port of Los Angeles





**Rexford  
Industrial**

## Leasing Contacts

### DAVID FREITAG

Executive Vice President

P: 213.270.2235 | M: 310.413.9390

E: [dfreitag@daumcre.com](mailto:dfreitag@daumcre.com)

CA License #00855673

### MARIANNA LINK

Executive Assistant

P: 213.270.2228

E: [mlink@daumcre.com](mailto:mlink@daumcre.com)

CA License #01943085



**Although all information is furnished regarding for sale, rental or financing is from sources deemed reliable, such information has not been verified and no express representation is made nor is any to be implied as to the accuracy thereof, and it is submitted subject to errors, omissions, changes of price, rental or other conditions, prior sale, lease or financing, or withdrawal without notice.**