

# ARCHITECTURAL | CREATIVE BUILDING

## FOR LEASE

3619 & 3621 EASTHAM DR.  
CULVER CITY | CA

eastham  
warner

FOR MORE INFORMATION, CONTACT:

**DAVID FREITAG**

P: 213.270.2235 | M: 310.413.9390  
dfreitag@daumcre.com  
CA License #00855673

**MARIANNA LINK**

P: 213.270.2228  
mlink@daumcre.com  
CA License #01943085

 **DAUM**  
COMMERCIAL REAL ESTATE SERVICES

Although all information is furnished regarding for sale, rental or financing is from sources deemed reliable, such information has not been verified and no express representation is made nor is any to be implied as to the accuracy thereof, and it is submitted subject to errors, omissions, changes of price, rental or other conditions, prior sale, lease or financing, or withdrawal without notice. D/AQ Corp. # 01129558

FOR LEASE

# eastham warner

## PROPERTY HIGHLIGHTS

- 2,552 SF & 3,853 SF Available
- HVAC in Suite
- Skylights
- Polished Concrete Floors
- Exposed Bow Truss Ceiling
- Glass Roll-Up Doors
- Ideal for Editing, Special Effects, Advertising and Post Production
- Large Common Area
- Parking: \$180 per space per month on site
- Kitchen in Suite
- Light Rail Stop at Washington & National
- **3619 EASTHAM DR.:**  
Rate \$4.30 IG PSF + CAM \$0.13 PSF
- **3621 EASTHAM DR.:**  
Rate \$4.35/SF/Month, plus CAM of \$0.13 per SF

Although all information is furnished regarding for sale, rental or financing is from sources deemed reliable, such information has not been verified and no express representation is made nor is any to be implied as to the accuracy thereof, and it is submitted subject to errors, omissions, changes of price, rental or other conditions, prior sale, lease or financing, or withdrawal without notice. D/AQ Corp. # 01129558

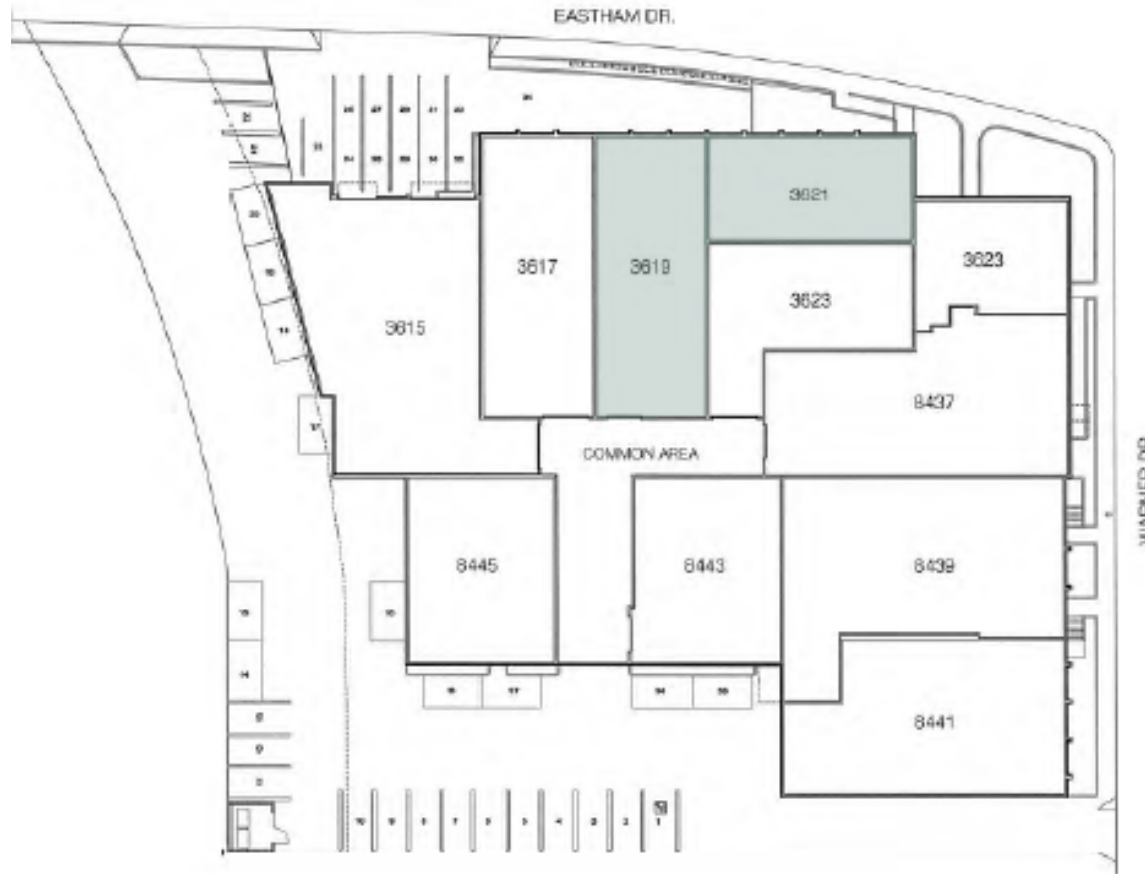
 **DAUM**  
COMMERCIAL REAL ESTATE SERVICES

FOR LEASE

# eastham warner



## SITE PLAN

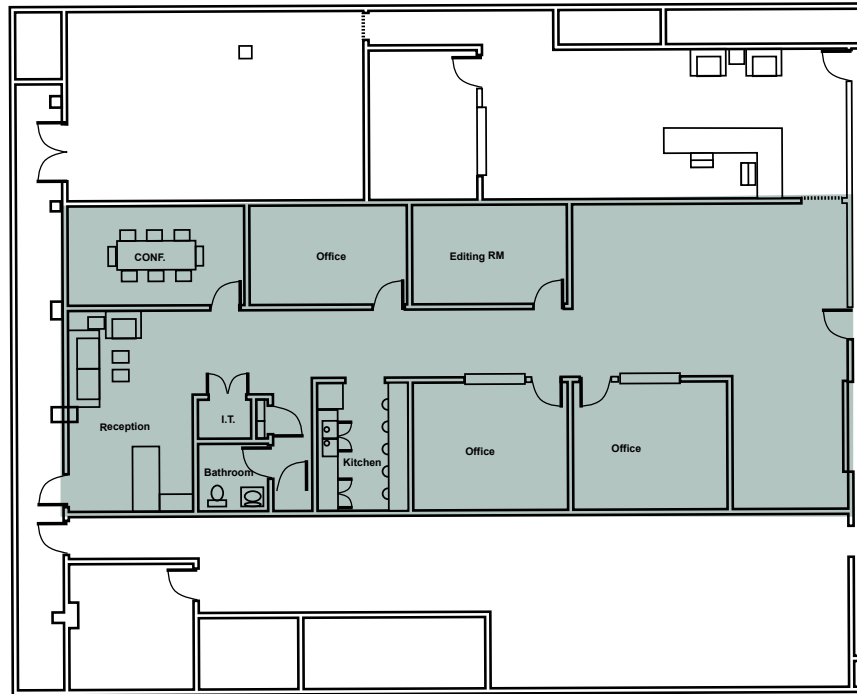


FOR LEASE

# eastham warner



UNIT  
**3619**  
2,552 SF



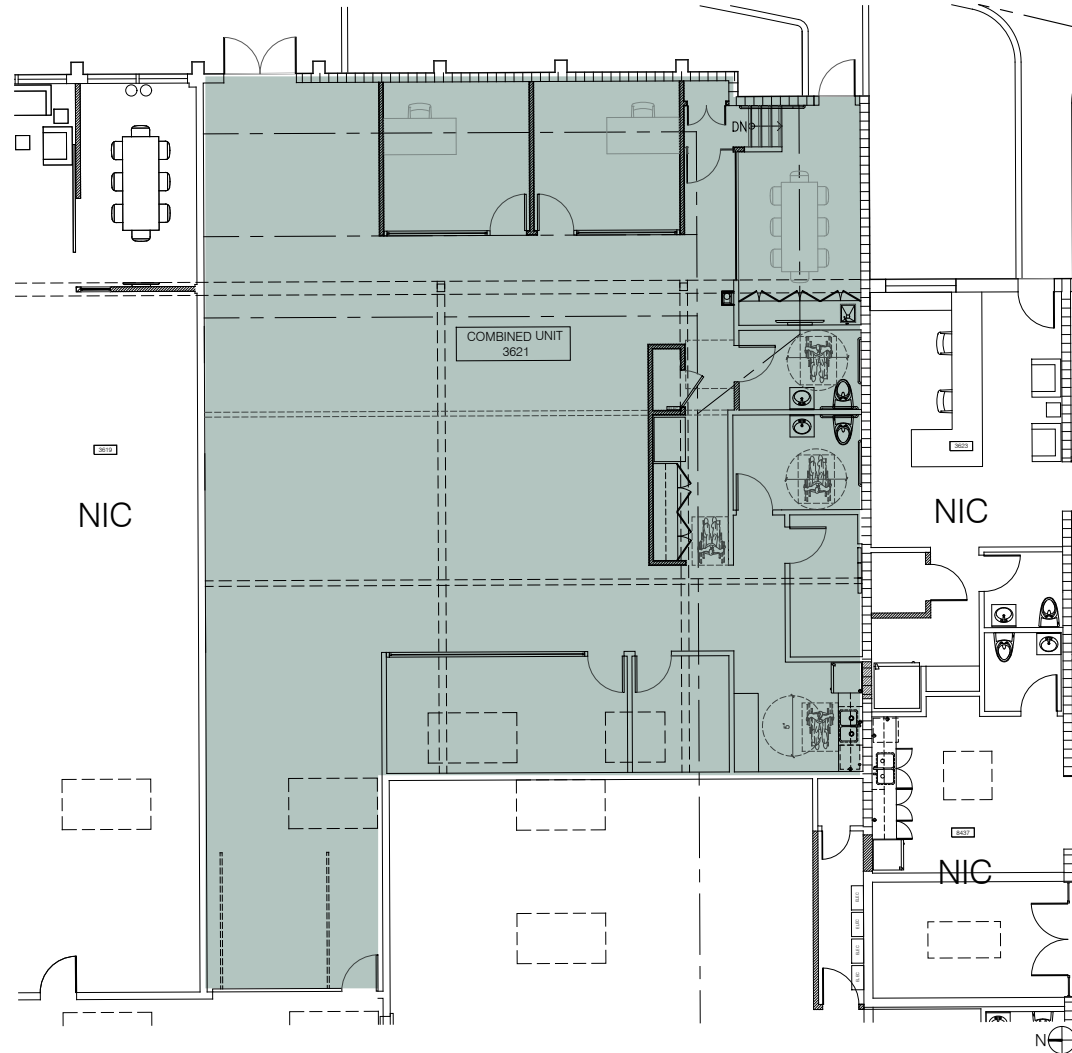
ARCHITECTURAL | CREATIVE BUILDING | FOR LEASE

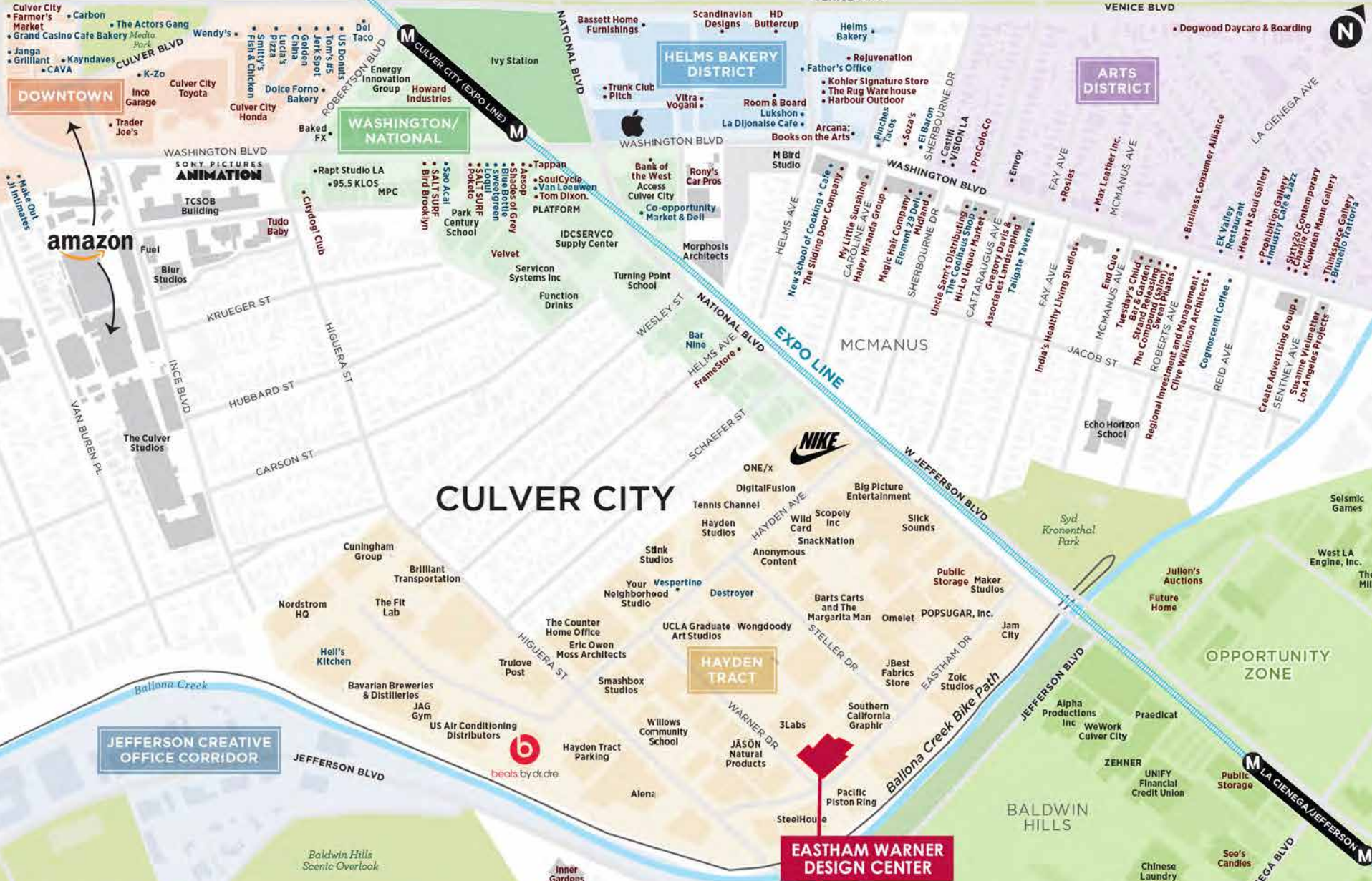
FOR LEASE

# eastham warner



UNIT  
**3621**  
3,853 SF





- Dining & Nightlife
  - Shopping & Services
- Metro Expo Line M