

±74,315 SF
AVAILABLE

INDUSTRIAL WAREHOUSE



6433 GAYHART ST. | COMMERCE | CA

FOR LEASE

FOR MORE INFORMATION, PLEASE CONTACT:

DAVID FREITAG

EXECUTIVE VICE PRESIDENT
P: 213.270.2235 | M: 310.413.9390
E: dfreitag@daumcre.com
CA License #00855673

JERRY SACKLER

EXECUTIVE VICE PRESIDENT
P: 213.270.2267 | M: 310.721.5000
E: jsackler@daumcre.com
CA License #01098039

MARIANNA LINK

EXECUTIVE ASSISTANT
P: 213.270.2228
E:mlink@daumcre.com
CA License #01943085



D/AQ Corp. #01129558. Maps Courtesy ©Google & ©Microsoft. Although all information is furnished regarding for sale, rental or financing is from sources deemed reliable, such information has not been verified and no express representation is made nor is any to be implied as to the accuracy thereof, and it is submitted subject to errors, omissions, changes of price, rental or other conditions, prior sale, lease or financing, or withdrawal without notice.

www.daumcommercial.com | www.theindustrial.com

6433 GAYHART ST. | COMMERCE | CA

FOR LEASE

INDUSTRIAL WAREHOUSE

AVAILABLE SF

±74,315 SF

±7,500 SF Office

LAND SF

144,000 SF

RATE

\$1.40 PSF NET

OCCUPANCY

Immediate

PARKING

100 Parking Spaces

BLDG. HEIGHT

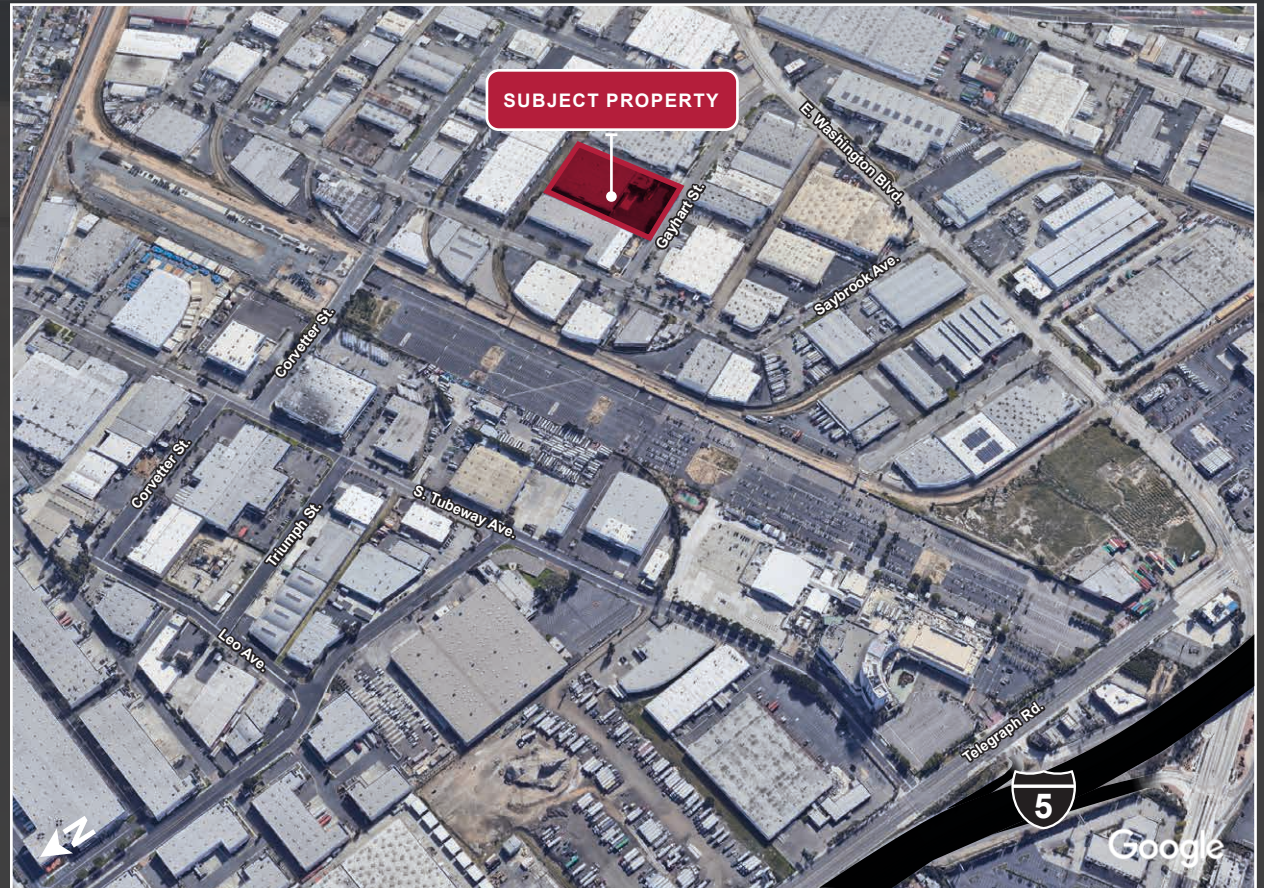
16'

DOCKS

8 Truck High Doors
Plus Exterior Dock

BUILDING FEATURES

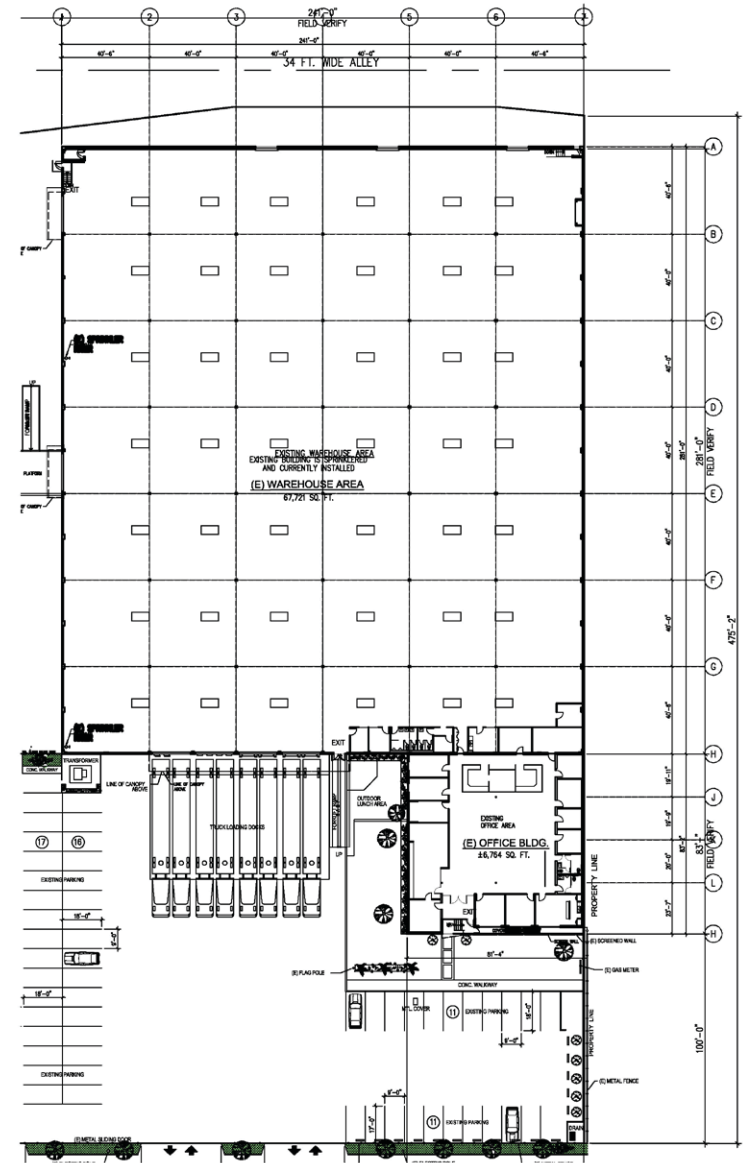
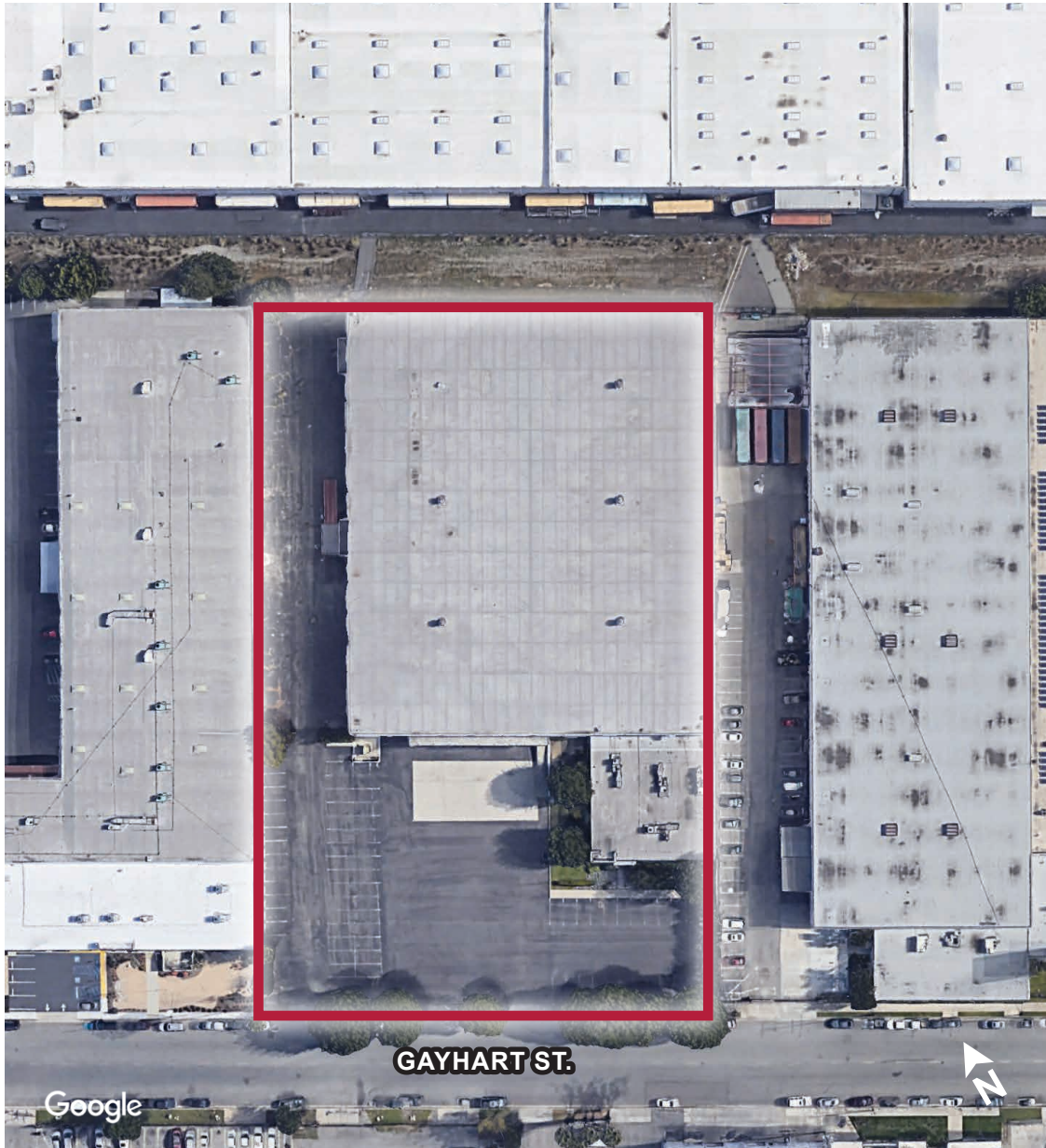
- ±74,315 SF on 144,000 SF of Land
- ±3.30 AC lot Size
- ± 7,500 SF of Immaculate Office Space
- 100 Plus Parking
- Fenced Yard
- 8 Truck High Doors Plus Exterior Dock
- 1200 Amps of Power
- Minutes from the 5 and 710
- Ideal Commerce location
- Property undergoing complete refurbishment
- NET expenses \$0.10 PSF.



6433 GAYHART ST. | COMMERCE | CA

FOR LEASE

INDUSTRIAL WAREHOUSE



D/AQ Corp. #01129558. Maps Courtesy ©Google & ©Microsoft. Although all information is furnished regarding for sale, rental or financing is from sources deemed reliable, such information has not been verified and no express representation is made nor is any to be implied as to the accuracy thereof, and it is submitted subject to errors, omissions, changes of price, rental or other conditions, prior sale, lease or financing, or withdrawal without notice.

www.daumcommercial.com | www.theIndustrial.com



6433 GAYHART ST. | COMMERCE | CA
FOR LEASE

INDUSTRIAL WAREHOUSE

PUBLIC TRANSPORTATION



COMMUTER RAIL

Montebello/Commerce Commuter Rail
 (Riverside Line)
 4 min | 1.3 mi

Commerce Commuter Rail
 5 min | 1.9 mi



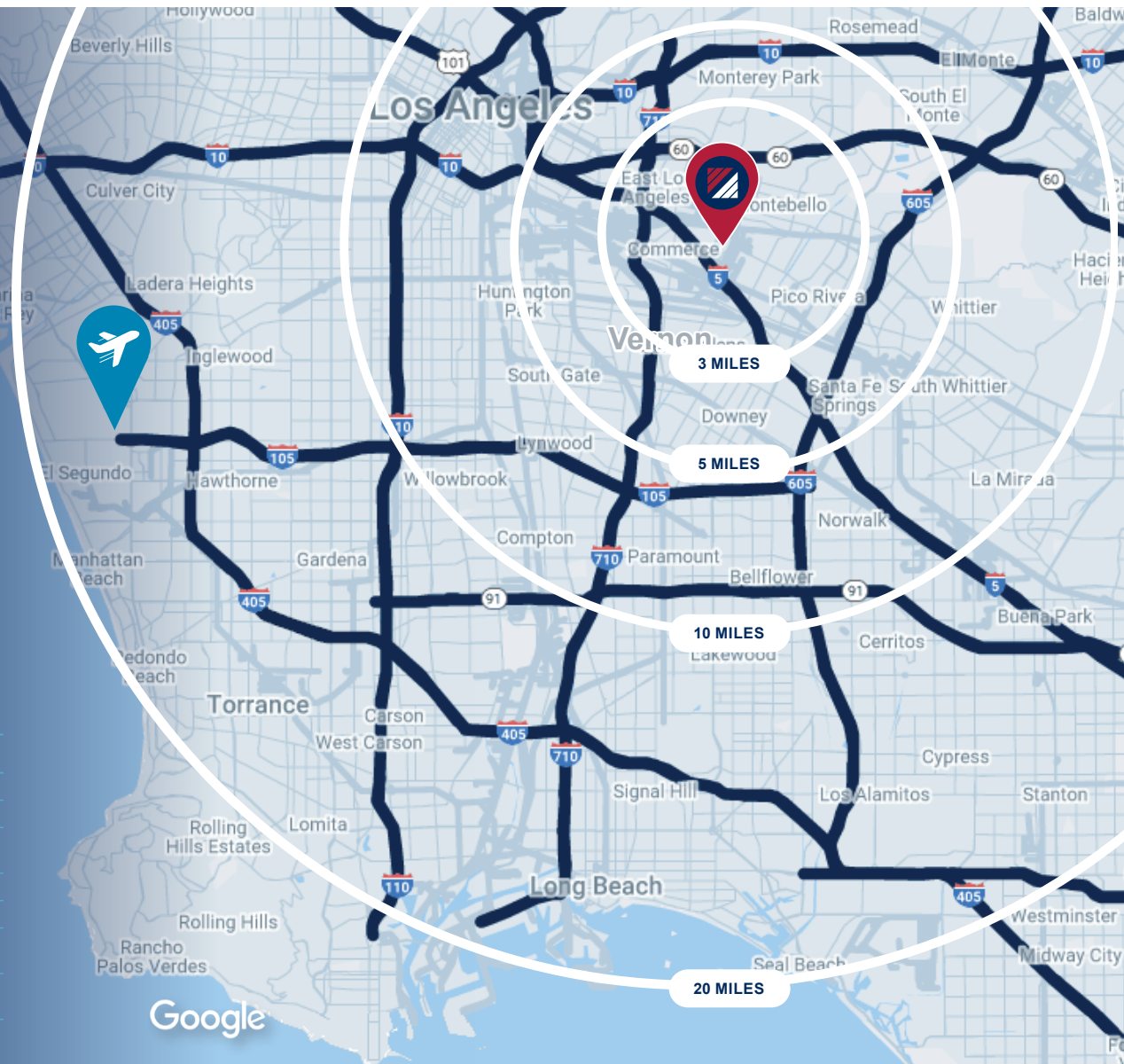
AIRPORT

Long Beach-Daugherty Field Airport
 28 min | 18.5 mi

Los Angeles International Airport
 34 min | 22.5 mi

Bob Hope Airport
 33 min | 23.9 mi

DEMOGRAPHICS	3 MILES	5 MILES	10 MILES
2010 POPULATION	236,039	725,522	3,183,449
2022 POPULATION	225,269	700,030	3,169,726
2027 POPULATION PROJECTION	219,755	684,427	3,118,391
2010 HOUSEHOLDS	63,046	194,927	899,499
2022 HOUSEHOLDS	59,735	186,795	898,303
2027 HOUSEHOLD PROJECTION	58,179	182,355	884,123
TOTAL SPECIFIED CONSUMER SPENDING (\$)	\$1.9B	\$6.3B	\$29.3B



Google

D/AQ Corp. #01129558. Maps Courtesy ©Google & ©Microsoft. Although all information is furnished regarding for sale, rental or financing is from sources deemed reliable, such information has not been verified and no express representation is made nor is any to be implied as to the accuracy thereof, and it is submitted subject to errors, omissions, changes of price, rental or other conditions, prior sale, lease or financing, or withdrawal without notice.

6433 GAYHART ST. | COMMERCE | CA
FOR LEASE

INDUSTRIAL WAREHOUSE



D/AQ Corp. #01129558. Maps Courtesy ©Google & ©Microsoft. Although all information is furnished regarding for sale, rental or financing is from sources deemed reliable, such information has not been verified and no express representation is made nor is any to be implied as to the accuracy thereof, and it is submitted subject to errors, omissions, changes of price, rental or other conditions, prior sale, lease or financing, or withdrawal without notice.

www.daumcommercial.com | www.theindustrial.com

DAUM
COMMERCIAL REAL ESTATE SERVICES