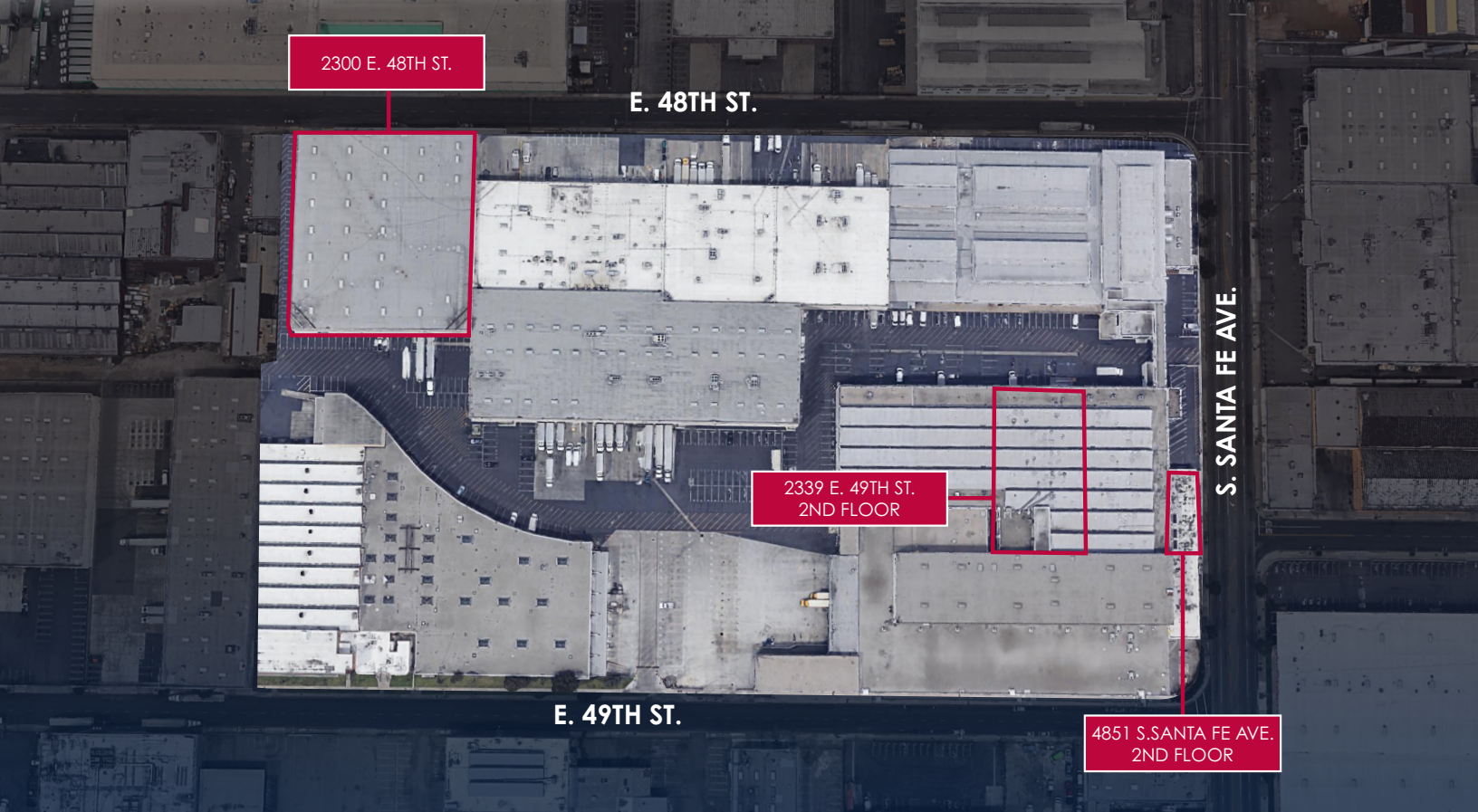


FOR LEASE

SANTA FE INDUSTRIAL CENTER



DAVID FREITAG
Executive Vice President
O: 213.270.2235 | C: 310.413.9390
david.freitag@daumcommercial.com
CA License #00855673

IMANI MCMILLAN
Associate
O: 213.270.2230 | C: 310.800.4589
imani.mcmillan@daumcommercial.com
CA License #02057115

MICHAEL CHASE
Associate
O: 213.270.2242 | C: 310.415.0472
michael.chase@daumcommercial.com
CA License #02071146

Although all information is furnished regarding sale, rental or financing is from sources deemed reliable, such information has not been verified and no express representation is made nor is any to be implied as to the accuracy thereof, and it is submitted subject to errors, omissions, changes of price, rental or other conditions, prior sale, lease or financing, or withdrawal without notice. All maps courtesy of Google Maps, Bing, and Google Earth. Images courtesy of Pixabay DJ/AQ Corp. # 01129558

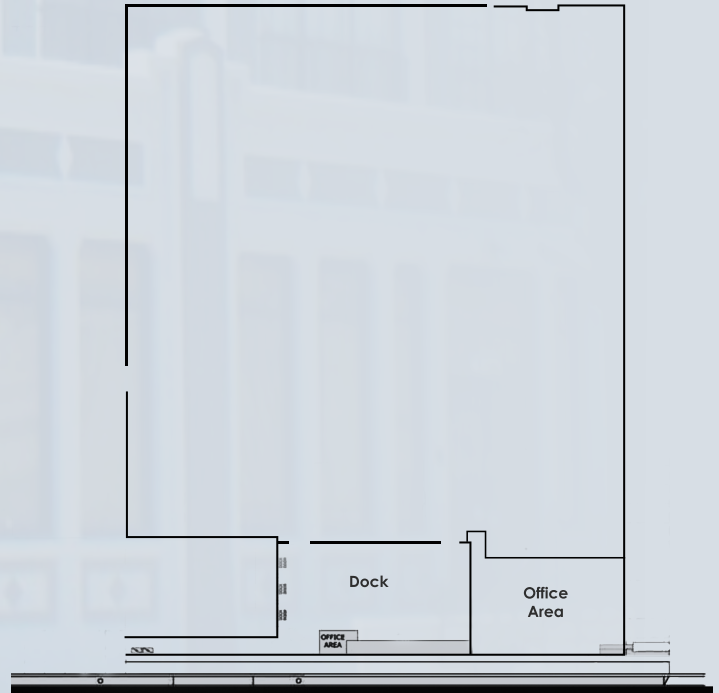


FOR LEASE | 63,140 SF

2300 E. 48TH STREET
FIRST FLOOR SPACE

PROPERTY HIGHLIGHTS

- Sprinklered
- 3 DH Doors
- Office: 2,278 SF
- 63 Parking Spaces
- Clear Height 30'
- Asking Price: \$0.84/SF NNN
- NNN fees: \$0.15/SF
- Available June 01, 2021



Although all information is furnished regarding for sale, rental or financing is from sources deemed reliable, such information has not been verified and no express representation is made nor is any to be implied as to the accuracy thereof, and it is submitted subject to errors, omissions, changes of price, rental or other conditions, prior sale, lease or financing, or withdrawal without notice. All maps courtesy of Google Maps, Bing, and Google Earth. Images courtesy of Pixabay D/AQ Corp. # 01129558

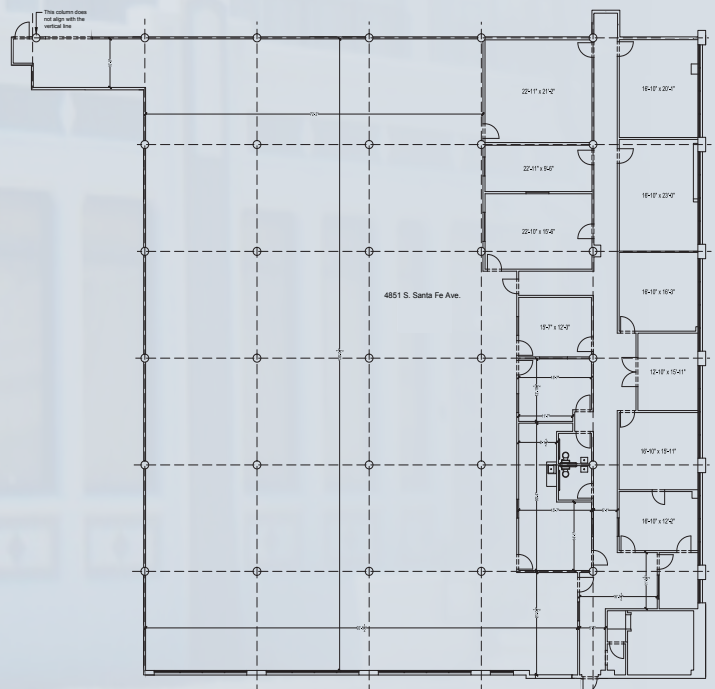


FOR LEASE | 16,500 SF

4851 S. SANTA FE AVE
SECOND FLOOR SPACE

PROPERTY HIGHLIGHTS

- Sprinklered
- 2 DH Doors
- 1 GL Door
- Office: 4,000 SF
- 14 Parking Spaces
- Clear Height 15'
- Abundant Natural Light
- Security at Complex
- Asking Price: \$0.60/SF
- CAM Fees: \$0.11/SF



Although all information is furnished regarding for sale, rental or financing is from sources deemed reliable, such information has not been verified and no express representation is made nor is any to be implied as to the accuracy thereof, and it is submitted subject to errors, omissions, changes of price, rental or other conditions, prior sale, lease or financing, or withdrawal without notice. All maps courtesy of Google Maps, Bing, and Google Earth. Images courtesy of Pixabay D/AQ Corp. # 01129558

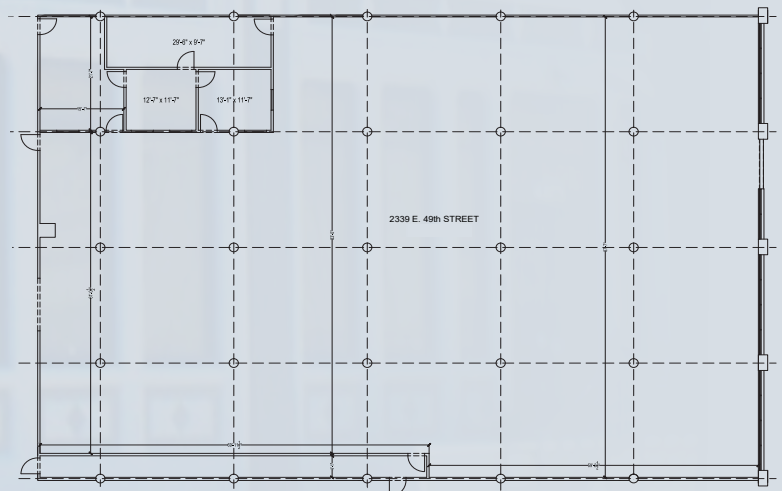


FOR LEASE | 11,233 SF

2339 E. 49TH STREET
SECOND FLOOR SPACE

PROPERTY HIGHLIGHTS

- Sprinklered
- 2 DH Doors
- 1 GL Door
- Office: 924 SF
- 10 Parking Spaces
- Clear Height 14'
- Abundant Natural Light
- Security at Complex
- Asking Price: \$0.69/SF
- CAM Fees: \$0.11/SF



Although all information is furnished regarding for sale, rental or financing is from sources deemed reliable, such information has not been verified and no express representation is made nor is any to be implied as to the accuracy thereof, and it is submitted subject to errors, omissions, changes of price, rental or other conditions, prior sale, lease or financing, or withdrawal without notice. All maps courtesy of Google Maps, Bing, and Google Earth. Images courtesy of Pixabay D/AQ Corp. # 01129558