

ARCHITECTURAL | CREATIVE BUILDING



FOR LEASE

EASTHAM WARNER

UNIT 8441 (AVAILABLE IMMEDIATELY) | CULVER CITY | CA

For more information, contact:

DAVID FREITAG

P: 213.270.2235

dfreitag@daumcre.com

CA License #00855673

MARIANNA LINK

P: 213.270.2228

mlink@daumcre.com

CA License # 01943085

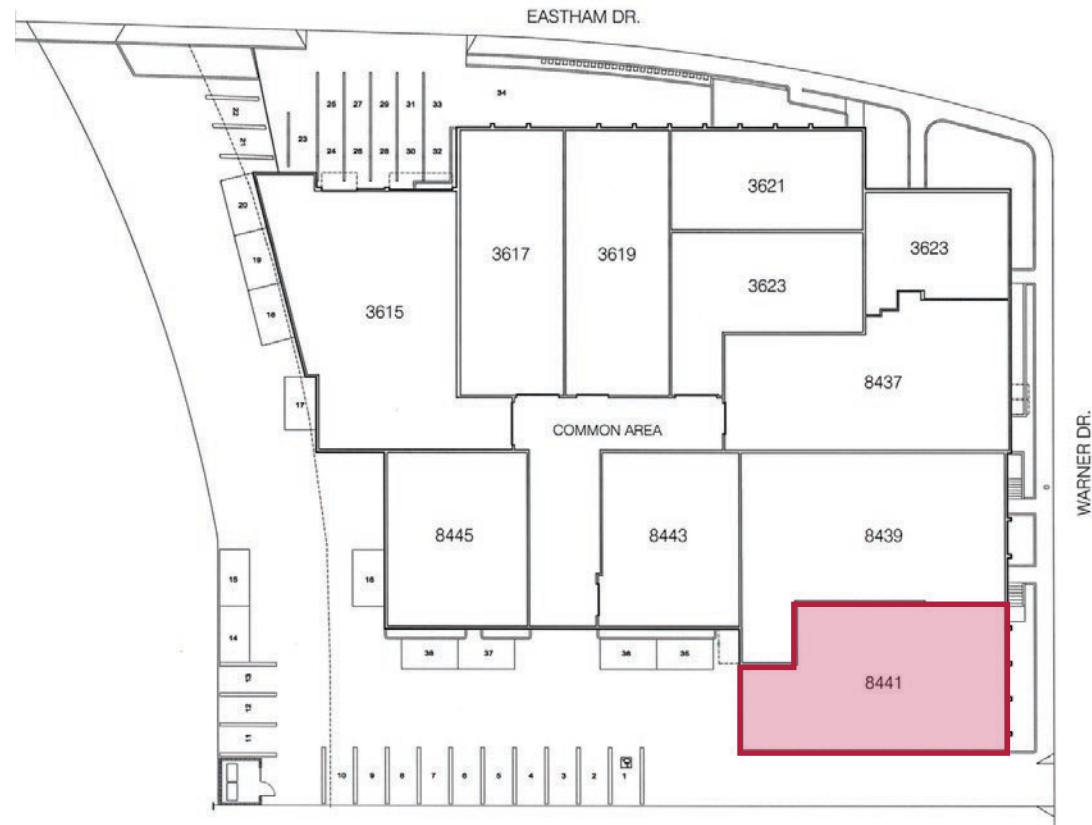
D/AQ Corp. #01129558. Maps Courtesy ©Google & ©Microsoft. Although all information is furnished regarding for sale, rental or financing is from sources deemed reliable, such information has not been verified and no express representation is made nor is any to be implied as to the accuracy thereof, and it is submitted subject to errors, omissions, changes of price, rental or other conditions, prior sale, lease or financing, or withdrawal without notice.

ONCOR INTERNATIONAL | www.daumcommercial.com

FOR LEASE EASTHAM WARNER

PROPERTY HIGHLIGHTS

- HVAC in Suite
- Skylights
- Polished Concrete Floors
- Exposed Bow Truss Ceiling
- Glass Roll-Up Doors
- Ideal for Editing, Special Effects, Advertising and Post Production
- Large Common Area
- Parking: \$185 per space per month on site
- Kitchen in Suite



DAVID FREITAG
P: 213.270.2235
dfreitag@daumcre.com
CA License #00855673

MARIANNA LINK
P: 213.270.2228
mlink@daumcre.com
CA License #01943085


COMMERCIAL REAL ESTATE SERVICES

D/AQ Corp. #01129558. Maps Courtesy @Google & @Microsoft. Although all information is furnished regarding for sale, rental or financing is from sources deemed reliable, such information has not been verified and no express representation is made nor is any to be implied as to the accuracy thereof, and it is submitted subject to errors, omissions, changes of price, rental or other conditions, prior sale, lease or financing, or withdrawal without notice.

ONCOR INTERNATIONAL | www.daumcommercial.com

FOR LEASE EASTHAM WARNER



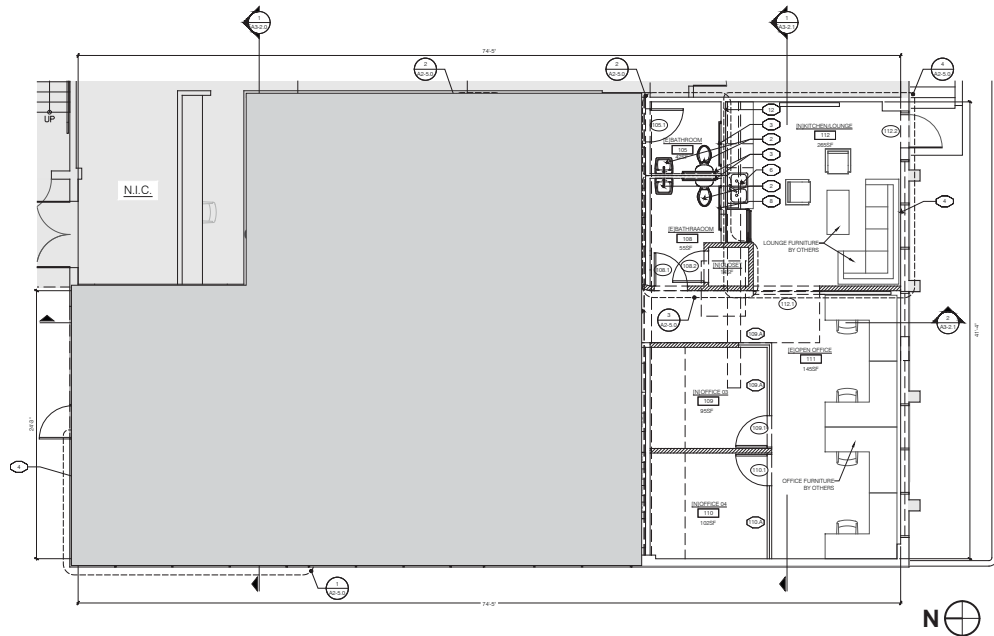
UNIT
8441



AVAILABLE
2,954 SF



TYPE
OFFICE/CREATIVE



DAVID FREITAG
P: 213.270.2235
dfreitag@daumcre.com
CA License #00855673

MARIANNA LINK
P: 213.270.2228
mlink@daumcre.com
CA License #01943085

DAUM
COMMERCIAL REAL ESTATE SERVICES

D/AQ Corp. #01129558. Maps Courtesy @Google & @Microsoft. Although all information is furnished regarding for sale, rental or financing is from sources deemed reliable, such information has not been verified and no express representation is made nor is any to be implied as to the accuracy thereof, and it is submitted subject to errors, omissions, changes of price, rental or other conditions, prior sale, lease or financing, or withdrawal without notice.
ONCOR INTERNATIONAL | www.daumcommercial.com

CULVER CITY

- Culver City Farmer's Market
- Carbon
- The Actors Gang
- Grand Casino Cafe Bakery
- Wendy's
- CAVA
- Kaydavies
- K-Zo
- Culver City Toyota
- Ince Garage
- Culver City Honda
- Dolce Forno Bakery
- Smith's Fish & Chicken
- Lucha's
- Golden
- Jerk Spot
- US Donuts
- Del Taco
- Energy Innovation Group
- Howard Industries
- Baked FX
- Rapt Studio LA
- 95.5 KLOS
- MPC
- Sao Acel
- SALT SOUP
- Bird Brooklyn
- RACT SURF
- SweetGreen
- Lohu
- Tappan
- SoulCycle
- Van Leeuwen
- Tom Dixon
- KASOP
- Hands of Grey
- Rolo
- Park Century School
- Velvet
- Servicon Systems Inc
- Function Drinks
- IDCSERVO Supply Center
- Turning Point School
- Morphosis Architects
- Bank of the West Access Culver City
- Co-opportunity Market & Deli
- Rony's Car Pros
- Trunk Club & Pitch
- Apple
- Helms Bakery District
- Rejuvenation
- Father's Office
- Kohler Signature Store
- The Rug Warehouse
- Harbour Outdoor
- Arcana: Books on the Arts
- Pinches Tacos
- Soza's
- El Baron
- SHERBOURNE DR
- Castelli
- VISION LA
- ProColo.Co
- Envy
- Fay Ave
- Rosies
- Max Leather Inc
- MCMANUS AVE
- Business Consumer Alliance
- EK Valley Restaurant
- Heart N Soul Gallery
- Prohibition Gallery
- Industry Cafe & Juice
- Sixth29 Contemporary
- Chiffre Co
- Klownen Mann Gallery
- Thinkspace Gallery
- Banello Trattoria

DOWNTOWN



- Take Out
- J. Intimates
- Fuel
- Blur Studios
- TCSOB Building
- SONY PICTURES ANIMATION
- The Culver Studios
- Krueger St
- Ince Blvd
- Hubbard St
- Carson St
- Van Buren Pl

WASHINGTON/NATIONAL

HELMS BAKERY DISTRICT

ARTS DISTRICT

EXPO LINE



HAYDEN TRACT

EASTHAM WARNER DESIGN CENTER

JEFFERSON CREATIVE OFFICE CORRIDOR

OPPORTUNITY ZONE

BALDWIN HILLS

- Dining & Nightlife
- Shopping & Services



FOR LEASE

ARCHITECTURAL | CREATIVE BUILDING

EASTHAM WARNER

UNIT 8441 (AVAILABLE IMMEDIATELY) | CULVER CITY | CA

DAVID FREITAG
P: 213.270.2235
dfreitag@daumcre.com
CA License #00855673

MARIANNA LINK
P: 213.270.2228
mlink@daumcre.com
CA License #01943085

 **DAUM**
COMMERCIAL REAL ESTATE SERVICES

D/AQ Corp. #01129558. Maps Courtesy @Google & @Microsoft. Although all information is furnished regarding for sale, rental or financing is from sources deemed reliable, such information has not been verified and no express representation is made nor is any to be implied as to the accuracy thereof, and it is submitted subject to errors, omissions, changes of price, rental or other conditions, prior sale, lease or financing, or withdrawal without notice.

ONCOR INTERNATIONAL | www.daumcommercial.com