



MULTI-PURPOSE BUILDING / CREATIVE OFFICE / INDUSTRIAL

FOR LEASE 13,276 SF

LOS ANGELES

2300

CALIFORNIA

EAST ELEVENTH STREET

DAVID FREITAG

P: 213.270.2235
dfreitag@daumcre.com
CA License #00855673

IMANI MCMILLAN

P: 213.270.2230
imcmillan@daumcre.com
CA License #02057115

D/AQ Corp. #01129558. Maps Courtesy ©Google & ©Microsoft. Although all information is furnished regarding for sale, rental or financing is from sources deemed reliable, such information has not been verified and no express representation is made nor is any to be implied as to the accuracy thereof, and it is submitted subject to errors, omissions, changes of price, rental or other conditions, prior sale, lease or financing, or withdrawal without notice.



DOWNTOWN
LOS ANGELES

ARTS
DISTRICT

FASHION
DISTRICT

SUBJECT PROPERTY

INTERSTATE
10

E. 15TH STREET

S. SANTA FE AVE

WASHINGTON BLVD.

FOR LEASE **EAST ELEVENTH STREET** LA | CA

1. THE ROW DTLA
2. ROLLING GREENS
3. WARNER MUSIC GROUP
4. SOHO HOUSE
5. VIRGIN HYPERLOOP ONE
6. AI ART HOUSE
7. THE HUNTSMAN

8. GUESS HEADQUARTERS
9. BLUE STAR DINER
10. 1700 S. SANTA FE CREATIVE OFFICE CAMPUS
11. KNUPP GALLERY LA
12. NIGHT GALLERY
13. GHEBALY GALLERY

STREET



13,276 SF
BUILDING SIZE



YES
SPRINKLERS



14'
CEILING HEIGHT



20
PARKING SPACES



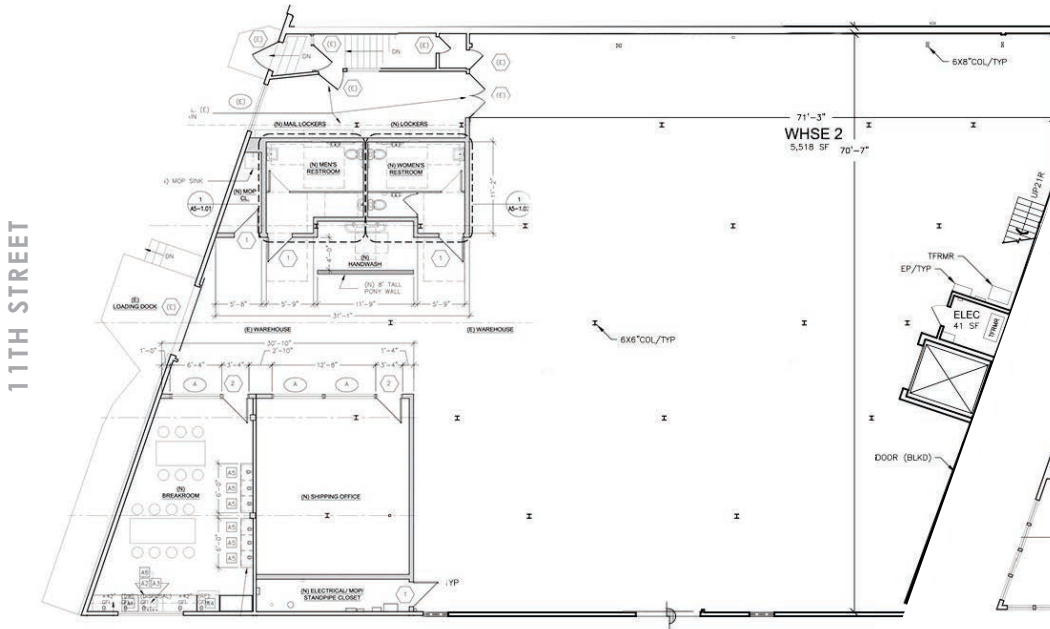
POL
BUILDING 33,372



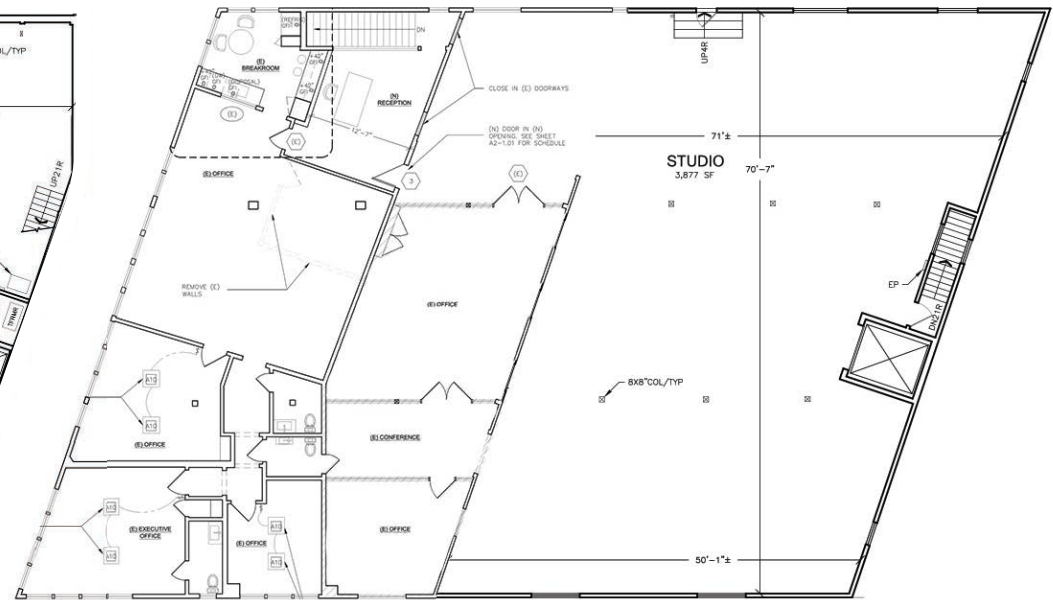
M2
ZONING

- Many Great Applications Including Design Studio, Showroom, Gallery and Creative Office
- Close Proximity to Arts District, and Four (4) Freeways: 10, 5, 101 and 60
- Abundant Natural Light
- Second Floor Creative Office/Design Space is Fully Air Conditioned
- Completely Renovated August 2020

FLOOR PLANS



ENTRY LEVEL FLOOR PLAN

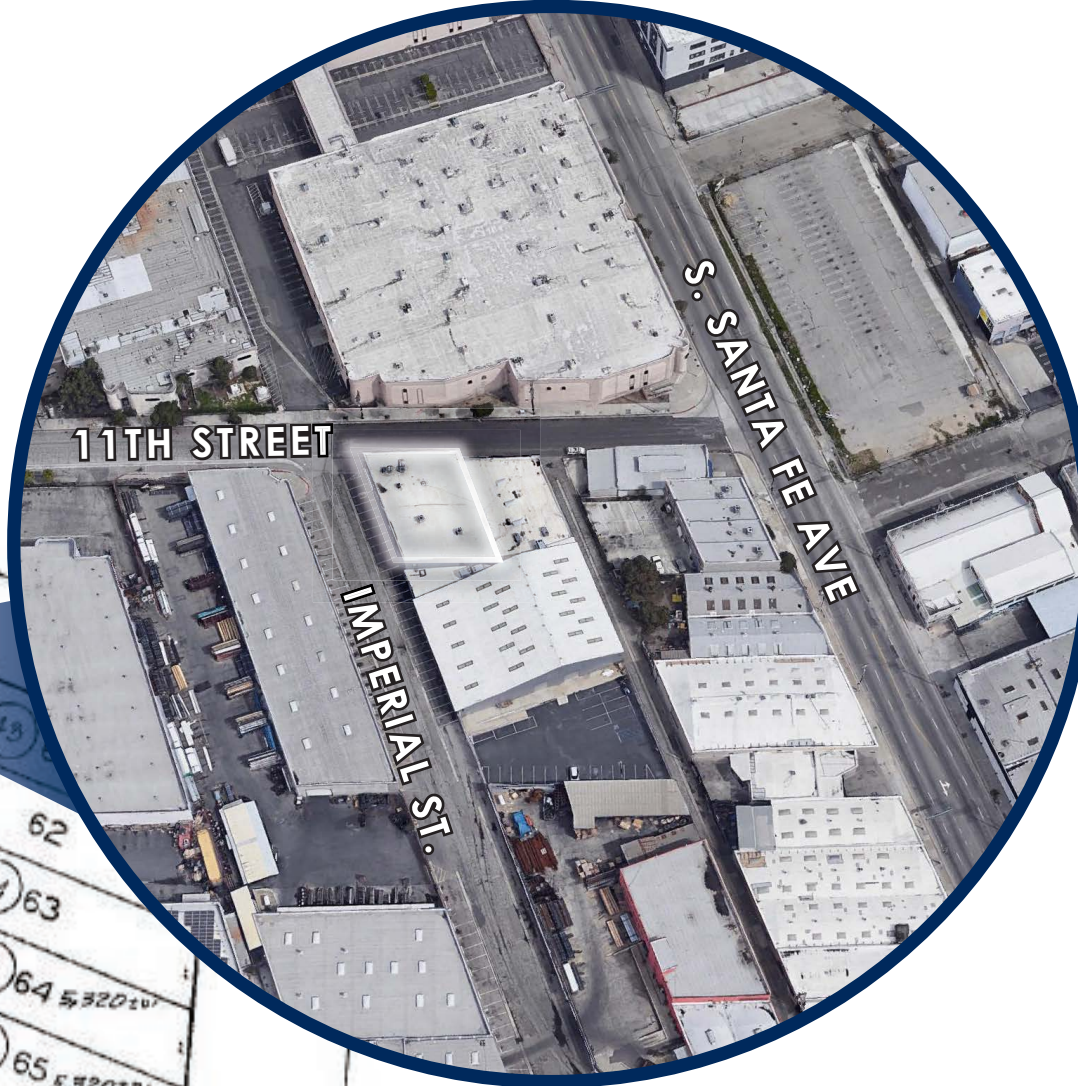
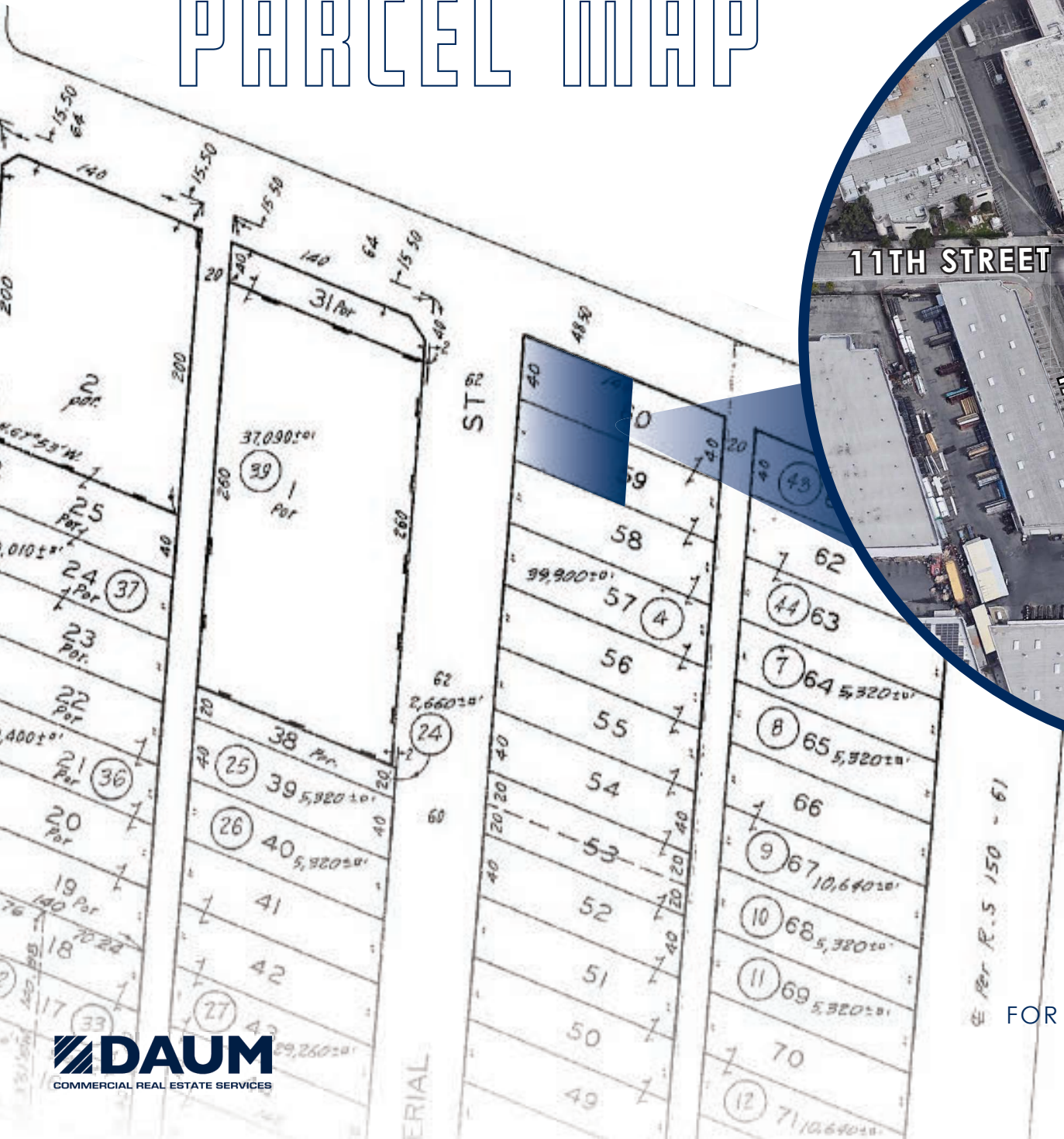


SECOND FLOOR CREATIVE OFFICE SPACE/DESIGN

*NOT TO SCALE

IMPERIAL STREET

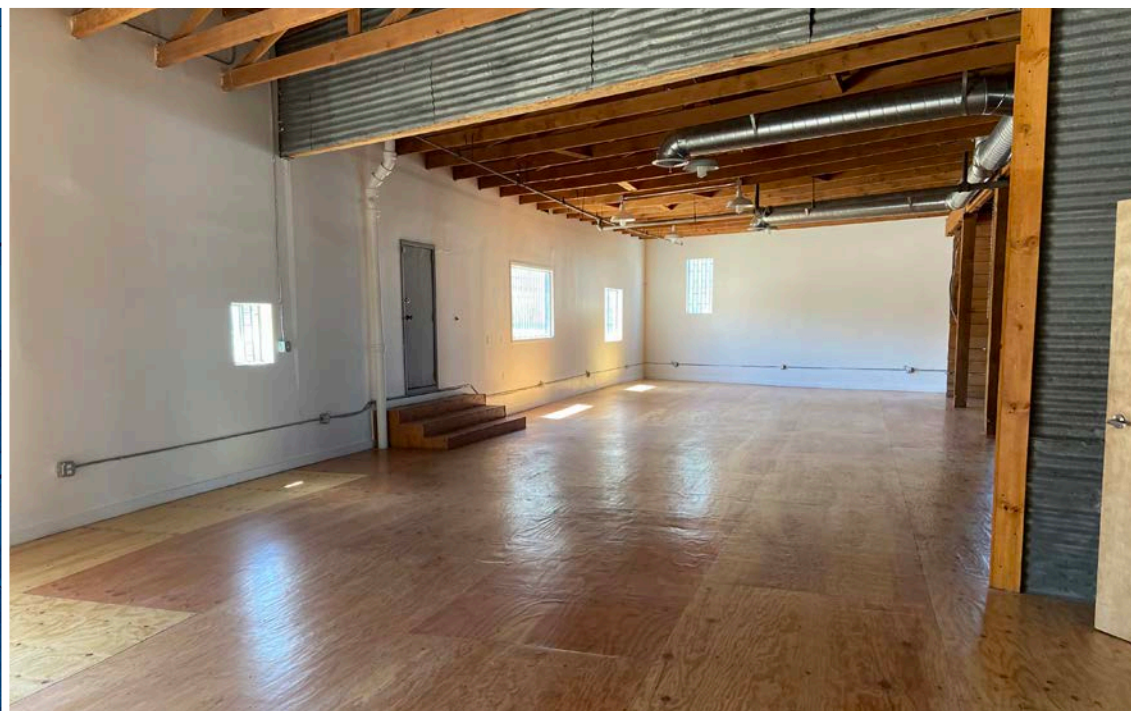
PARCEL MAP

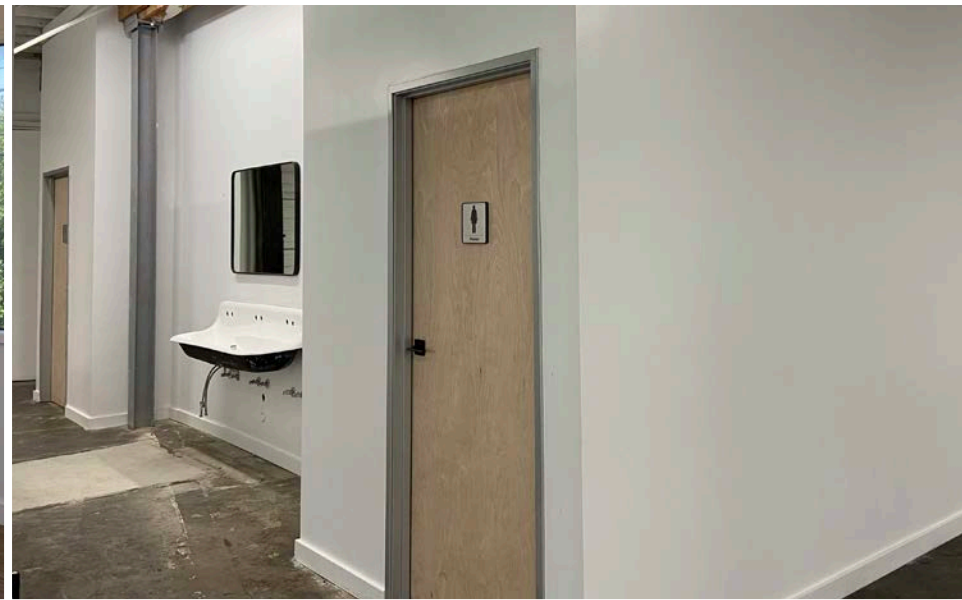




FOR LEASE **EAST ELEVENTH STREET** LA | CA

DAUM
COMMERCIAL REAL ESTATE SERVICES





DAUM
COMMERCIAL REAL ESTATE SERVICES

FOR LEASE **EAST ELEVENTH STREET LA | CA**

MULTI-PURPOSE BUILDING / CREATIVE OFFICE / INDUSTRIAL

FOR LEASE 13,276 SF

LOS ANGELES

2300

CALIFORNIA

EAST ELEVENTH STREET

DAVID FREITAG

P: 213.270.2235

dfreitag@daumcre.com

CA License #00855673

IMANI MCMILLAN

P: 213.270.2230

imcmillan@daumcre.com

CA License #02057115

 **DAUM**
COMMERCIAL REAL ESTATE SERVICES

D/AQ Corp. #01129558. Maps Courtesy @Google & @Microsoft. Although all information is furnished regarding for sale, rental or financing is from sources deemed reliable, such information has not been verified and no express representation is made nor is any to be implied as to the accuracy thereof, and it is submitted subject to errors, omissions, changes of price, rental or other conditions, prior sale, lease or financing, or withdrawal without notice.

ONCOR INTERNATIONAL | www.daumcommercial.com